



ELECTRONIC COPY

LG804660529 Report verification at igi.org



June 22, 2026 IGI Report Number LG804660529 Description LABORATORY GROWN DIAMOND Shape and Cutting Style ROUND BRILLIANT Measurements 14.35 - 14.41 X 8.58 MM GRADING RESULTS Carat Weight 11.03 CARATS Color Grade F Clarity Grade VVS 2 Cut Grade EXCELLENT

June 22, 2026 IGI Report Number LG804660529 Description LABORATORY GROWN DIAMOND Shape and Cutting Style ROUND BRILLIANT Measurements 14.35 - 14.41 X 8.58 MM

GRADING RESULTS

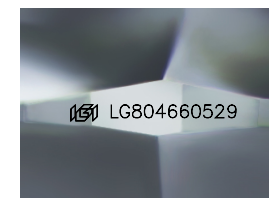
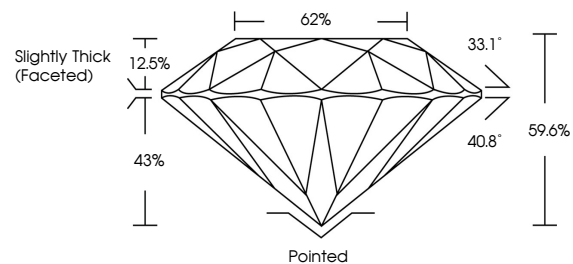
Carat Weight 11.03 CARATS Color Grade F Clarity Grade VVS 2 Cut Grade EXCELLENT

ADDITIONAL GRADING INFORMATION

Polish EXCELLENT Symmetry EXCELLENT Fluorescence NONE Inscription(s) IGI LG804660529

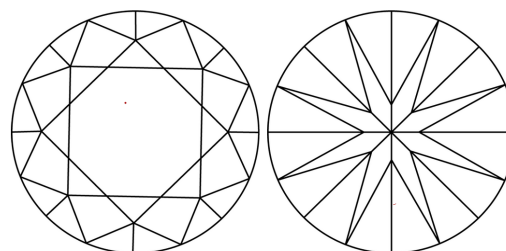
Comments: This Laboratory Grown Diamond was created by Chemical Vapor Deposition (CVD) growth process. Type IIa

PROPORTIONS



Sample Image Used

CLARITY CHARACTERISTICS



KEY TO SYMBOLS

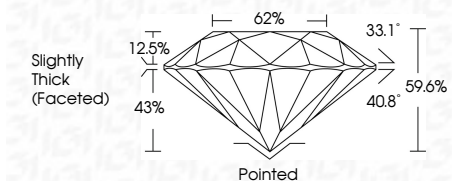
Red symbols indicate internal characteristics. Green symbols indicate external characteristics.

COLOR

D E F G H I J Faint Very Light Light

CLARITY

Table with columns: FL, IF, VS 1-2, VS 1-2, SI 1-2, I 1-3 and corresponding descriptions: Flawless, Internally Flawless, Very Very Slightly Included, Very Slightly Included, Slightly Included, Included



ADDITIONAL GRADING INFORMATION

Polish EXCELLENT Symmetry EXCELLENT Fluorescence NONE Inscription(s) IGI LG804660529 Comments: This Laboratory Grown Diamond was created by Chemical Vapor Deposition (CVD) growth process. Type IIa



IGI



June 22, 2026 IGI Report No LG804660529 ROUND BRILLIANT 11.03 CARATS F VVS 2 EXCELLENT 62% Slightly Thick (Faceted) Pointed EXCELLENT EXCELLENT NONE NONE IGI LG804660529 Comments: This Laboratory Grown Diamond was created by Chemical Vapor Deposition (CVD) growth process. Type IIa