



ELECTRONIC COPY

LG804658836
Report verification at igi.org



June 29, 2026
IGI Report Number **LG804658836**
Description **LABORATORY GROWN DIAMOND**
Shape and Cutting Style **CUT CORNERED
RECTANGULAR MODIFIED
BRILLIANT**
Measurements **8.97 X 6.29 X 4.18 MM**
GRADING RESULTS
Carat Weight **2.02 CARATS**
Color Grade **D**
Clarity Grade **VVS 1**

LABORATORY GROWN DIAMOND REPORT

June 29, 2026
IGI Report Number **LG804658836**
Description **LABORATORY GROWN DIAMOND**
Shape and Cutting Style **CUT CORNERED RECTANGULAR
MODIFIED BRILLIANT**
Measurements **8.97 X 6.29 X 4.18 MM**

GRADING RESULTS

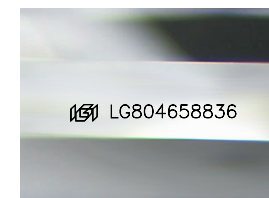
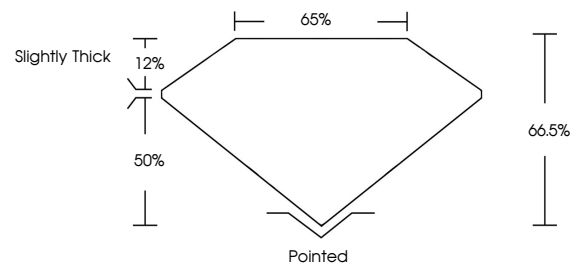
Carat Weight **2.02 CARATS**
Color Grade **D**
Clarity Grade **VVS 1**

ADDITIONAL GRADING INFORMATION

Polish **EXCELLENT**
Symmetry **EXCELLENT**
Fluorescence **NONE**
Inscription(s) **IGI LG804658836**

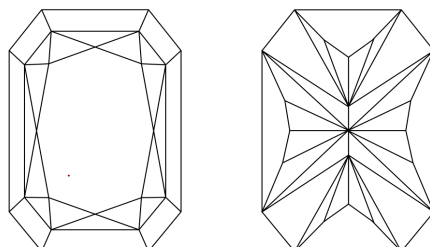
Comments: This Laboratory Grown Diamond was created by Chemical Vapor Deposition (CVD) growth process. Type IIa

PROPORTIONS



Sample Image Used

CLARITY CHARACTERISTICS



KEY TO SYMBOLS

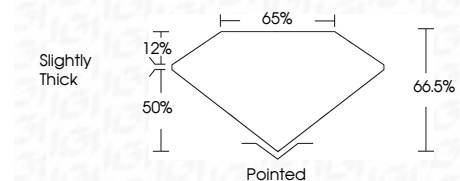
Red symbols indicate internal characteristics.
Green symbols indicate external characteristics.

COLOR

D E F G H I J Faint Very Light Light

CLARITY

FL	IF	VVS ¹⁻²	VS ¹⁻²	SI ¹⁻²	I ¹⁻³
Flawless	Internally Flawless	Very Very Slightly Included	Very Slightly Included	Slightly Included	Included



ADDITIONAL GRADING INFORMATION

Polish **EXCELLENT**
Symmetry **EXCELLENT**
Fluorescence **NONE**
Inscription(s) **IGI LG804658836**
Comments: This Laboratory Grown Diamond was created by Chemical Vapor Deposition (CVD) growth process. Type IIa



June 29, 2026
IGI Report No. LG804658836
CUT CORNERED RECT. MODIFIED BRILLIANT
8.97 X 6.29 X 4.18 MM
2.02 CARATS
D
VVS 1
66.5%
50%
Slightly Thick
Pointed
EXCELLENT
EXCELLENT
NONE
IGI LG804658836
Comments: This Laboratory Grown Diamond was created by Chemical Vapor Deposition (CVD) growth process. Type IIa