



ELECTRONIC COPY

LG804658415
Report verification at igi.org



June 29, 2026

IGI Report Number **LG804658415**

Description **LABORATORY GROWN DIAMOND**

Shape and Cutting Style **PEAR MODIFIED BRILLIANT**

Measurements **10.79 X 6.63 X 4.18 MM**

GRADING RESULTS

Carat Weight **2.10 CARATS**

Color Grade **FANCY VIVID PINK**

Clarity Grade **VVS 2**

June 29, 2026

IGI Report Number **LG804658415**

Description **LABORATORY GROWN DIAMOND**

Shape and Cutting Style **PEAR MODIFIED BRILLIANT**

Measurements **10.79 X 6.63 X 4.18 MM**

GRADING RESULTS

Carat Weight **2.10 CARATS**

Color Grade **FANCY VIVID PINK**

Clarity Grade **VVS 2**

ADDITIONAL GRADING INFORMATION

Polish **VERY GOOD**

Symmetry **VERY GOOD**

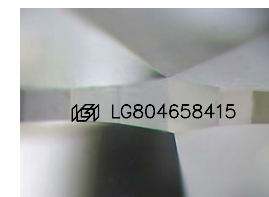
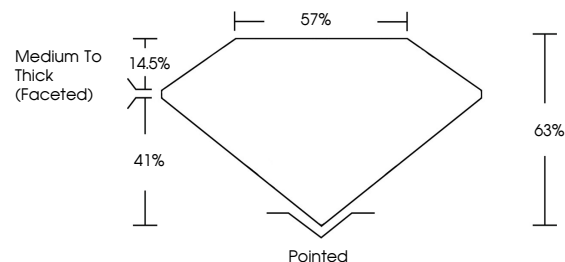
Fluorescence **SLIGHT**

Inscription(s) **IGI LG804658415**

Comments: This Laboratory Grown Diamond was created by Chemical Vapor Deposition (CVD) growth process.

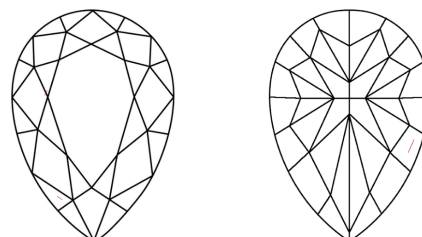
Indications of post-growth treatment.

PROPORTIONS



Sample Image Used

CLARITY CHARACTERISTICS



KEY TO SYMBOLS

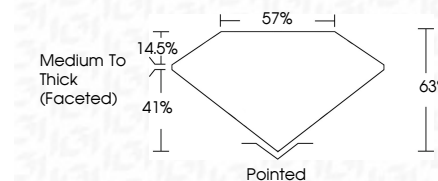
Red symbols indicate internal characteristics.
Green symbols indicate external characteristics.

COLOR

D E F G H I J Faint Very Light Light

CLARITY

FL	IF	VVS ¹⁻²	VS ¹⁻²	SI ¹⁻²	I ¹⁻³
Flawless	Internally Flawless	Very Very Slightly Included	Very Slightly Included	Slightly Included	Included



ADDITIONAL GRADING INFORMATION

Polish **VERY GOOD**

Symmetry **VERY GOOD**

Fluorescence **SLIGHT**

Inscription(s) **IGI LG804658415**

Comments: This Laboratory Grown Diamond was created by Chemical Vapor Deposition (CVD) growth process. Indications of post-growth treatment.



June 29, 2026
IGI Report No. LG804658415
PEAR MODIFIED BRILLIANT

2.10 CARATS
Carat Weight
FANCY VIVID PINK
Color Grade
VVS 2
Clarity Grade
63%
Depth
57%
Table
Medium to Thick (Faceted)
Girdle
Pointed
Culet
VERY GOOD
Polish
VERY GOOD
Symmetry
SLIGHT
Fluorescence
IGI LG804658415
Inscription(s)

Comments: This Laboratory Grown Diamond was created by Chemical Vapor Deposition (CVD) growth process. Indications of post-growth treatment.