



ELECTRONIC COPY

LG804657473
Report verification at igi.org



June 27, 2026

IGI Report Number LG804657473

Description LABORATORY GROWN DIAMOND

Shape and Cutting Style CUT CORNERED RECTANGULAR MODIFIED BRILLIANT

Measurements 15.61 X 10.62 X 7.44 MM

GRADING RESULTS

Carat Weight 10.87 CARATS

Color Grade F

Clarity Grade VVS 2

ADDITIONAL GRADING INFORMATION

Carat Weight 10.87 CARATS

Color Grade F

Clarity Grade VVS 2

Polish EXCELLENT

Symmetry EXCELLENT

Fluorescence NONE

Inscription(s) IGI LG804657473

Comments: This Laboratory Grown Diamond was created by Chemical Vapor Deposition (CVD) growth process.

Type IIa

Type IIa

Type IIa

Type IIa

Type IIa

Type IIa

Type IIa

Type IIa

Type IIa

Type IIa

Type IIa

Type IIa

Type IIa

Type IIa

Type IIa

Type IIa

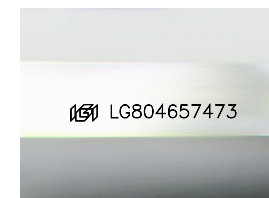
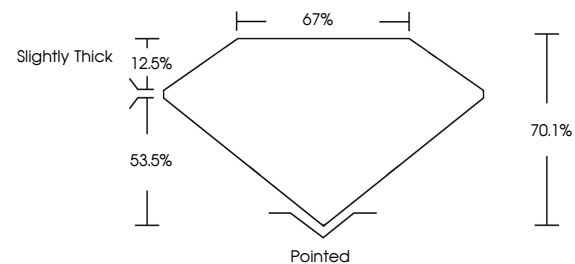
Type IIa

Type IIa

Type IIa

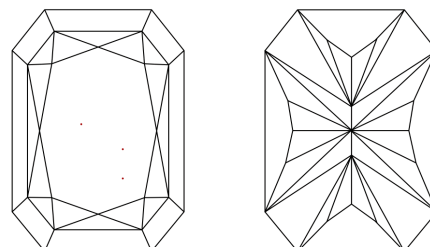
Type IIa

PROPORTIONS



Sample Image Used

CLARITY CHARACTERISTICS



KEY TO SYMBOLS

Red symbols indicate internal characteristics. Green symbols indicate external characteristics.

COLOR

D E F G H I J Faint Very Light Light

CLARITY

FL IF VVS 1-2 VS 1-2 SI 1-2 I 1-3
Flawless Internally Flawless Very Very Slightly Included Very Slightly Included Slightly Included Included



Summary of report details including date, report number, description, measurements, grading results, and additional information.