



**ELECTRONIC COPY**

LG804652849  
Report verification at igi.org



June 15, 2026

IGI Report Number **LG804652849**

Description **LABORATORY GROWN DIAMOND**

Shape and Cutting Style **PRINCESS CUT**

Measurements **7.21 X 7.17 X 5.20 MM**

**GRADING RESULTS**

Carat Weight **2.40 CARATS**

Color Grade **E**

Clarity Grade **VVS 1**

June 15, 2026  
IGI Report Number **LG804652849**  
Description **LABORATORY GROWN DIAMOND**  
Shape and Cutting Style **PRINCESS CUT**  
Measurements **7.21 X 7.17 X 5.20 MM**

**GRADING RESULTS**

Carat Weight **2.40 CARATS**

Color Grade **E**

Clarity Grade **VVS 1**

**ADDITIONAL GRADING INFORMATION**

Polish **EXCELLENT**

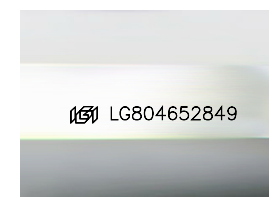
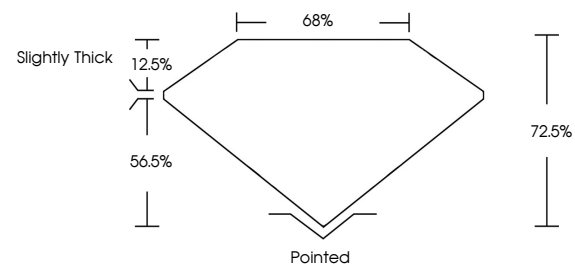
Symmetry **EXCELLENT**

Fluorescence **NONE**

Inscription(s) **IGI LG804652849**

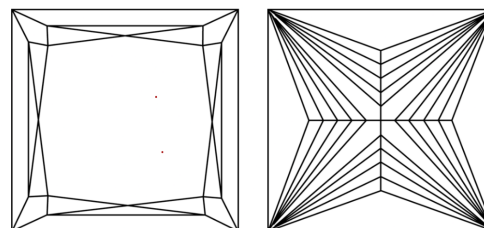
Comments: This Laboratory Grown Diamond was created by Chemical Vapor Deposition (CVD) growth process.  
Type IIa

**PROPORTIONS**



Sample Image Used

**CLARITY CHARACTERISTICS**



**KEY TO SYMBOLS**

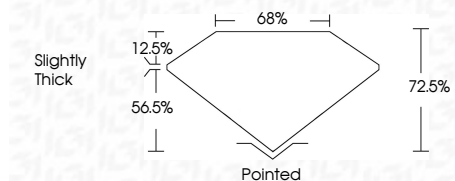
Red symbols indicate internal characteristics.  
Green symbols indicate external characteristics.

**COLOR**

D E F G H I J Faint Very Light Light

**CLARITY**

FL	IF	VVS <sup>1-2</sup>	VS <sup>1-2</sup>	SI <sup>1-2</sup>	I <sup>1-3</sup>
Flawless	Internally Flawless	Very Very Slightly Included	Very Slightly Included	Slightly Included	Included



**ADDITIONAL GRADING INFORMATION**

Polish **EXCELLENT**

Symmetry **EXCELLENT**

Fluorescence **NONE**

Inscription(s) **IGI LG804652849**

Comments: This Laboratory Grown Diamond was created by Chemical Vapor Deposition (CVD) growth process.  
Type IIa



**IGI**



June 15, 2026  
IGI Report No. LG804652849  
PRINCESS CUT

2.40 CARATS  
E

7.21 X 7.17 X 5.20 MM  
Carat Weight  
Color Grade  
Clarity Grade  
Table  
Depth  
Girdle

VVS 1  
72.05%  
65%  
Slightly Thick

Pointed  
EXCELLENT  
EXCELLENT  
NONE  
IGI LG804652849

Culet  
Polish  
Symmetry  
Fluorescence  
Inscription(s)

Comments: This Laboratory Grown Diamond was created by Chemical Vapor Deposition (CVD) growth process.  
Type IIa