



**ELECTRONIC COPY**

LG804652752  
Report verification at igi.org



June 22, 2026  
IGI Report Number **LG804652752**  
Description **LABORATORY GROWN DIAMOND**  
Shape and Cutting Style **ROUND BRILLIANT**  
Measurements **9.72 - 9.78 X 6.02 MM**  
**GRADING RESULTS**  
Carat Weight **3.51 CARATS**  
Color Grade **FANCY INTENSE PINK**  
Clarity Grade **VVS 2**  
Cut Grade **IDEAL**

June 22, 2026  
IGI Report Number **LG804652752**  
Description **LABORATORY GROWN DIAMOND**  
Shape and Cutting Style **ROUND BRILLIANT**  
Measurements **9.72 - 9.78 X 6.02 MM**

**GRADING RESULTS**

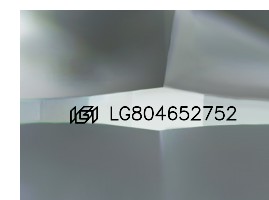
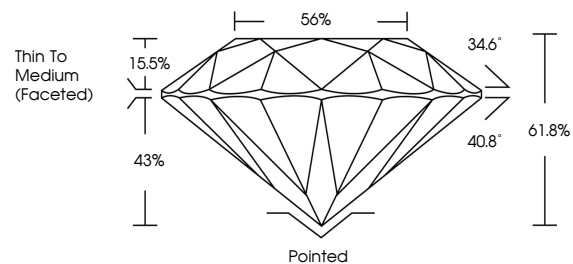
Carat Weight **3.51 CARATS**  
Color Grade **FANCY INTENSE PINK**  
Clarity Grade **VVS 2**  
Cut Grade **IDEAL**

**ADDITIONAL GRADING INFORMATION**

Polish **EXCELLENT**  
Symmetry **EXCELLENT**  
Fluorescence **SLIGHT**  
Inscription(s) **IGI LG804652752**

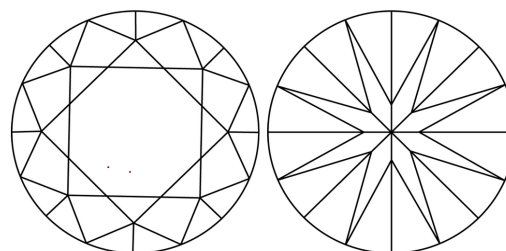
Comments: This Laboratory Grown Diamond was created by Chemical Vapor Deposition (CVD) growth process.  
Indications of post-growth treatment.

**PROPORTIONS**



Sample Image Used

**CLARITY CHARACTERISTICS**



**KEY TO SYMBOLS**

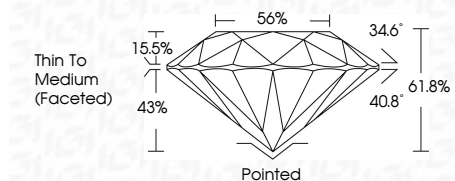
Red symbols indicate internal characteristics.  
Green symbols indicate external characteristics.

**COLOR**

D E F G H I J Faint Very Light Light

**CLARITY**

FL	IF	VVS <sup>1-2</sup>	VS <sup>1-2</sup>	SI <sup>1-2</sup>	I <sup>1-3</sup>
Flawless	Internally Flawless	Very Very Slightly Included	Very Slightly Included	Slightly Included	Included



**ADDITIONAL GRADING INFORMATION**

Polish **EXCELLENT**  
Symmetry **EXCELLENT**  
Fluorescence **SLIGHT**  
Inscription(s) **IGI LG804652752**  
Comments: This Laboratory Grown Diamond was created by Chemical Vapor Deposition (CVD) growth process.  
Indications of post-growth treatment.



June 22, 2026  
IGI Report No. LG804652752  
ROUND BRILLIANT  
9.72 - 9.78 X 6.02 MM  
3.51 CARATS  
FANCY INTENSE PINK  
VVS 2  
IDEAL  
61.8%  
56%  
Thin To Medium (Faceted)  
Pointed  
EXCELLENT  
EXCELLENT  
SLIGHT  
IGI LG804652752  
Comments: This Laboratory Grown Diamond was created by Chemical Vapor Deposition (CVD) growth process.  
Indications of post-growth treatment.