



ELECTRONIC COPY

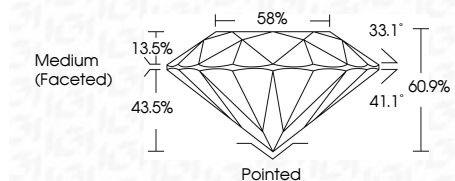
LG804650856 Report verification at igi.org



June 11, 2026 IGI Report Number LG804650856 Description LABORATORY GROWN DIAMOND Shape and Cutting Style ROUND BRILLIANT Measurements 8.12 - 8.15 X 4.96 MM

GRADING RESULTS

Carat Weight 2.02 CARATS Color Grade D Clarity Grade VVS 2 Cut Grade IDEAL



ADDITIONAL GRADING INFORMATION

Polish EXCELLENT Symmetry EXCELLENT Fluorescence NONE Inscription(s) IGI LG804650856 Comments: This Laboratory Grown Diamond was created by Chemical Vapor Deposition (CVD) growth process. Type IIa



June 11, 2026 IGI Report No LG804650856 ROUND BRILLIANT 8.12 - 8.15 X 4.96 MM 2.02 CARATS D VVS 2 IDEAL 60.9% 58% Medium (Faceted) Pointed EXCELLENT EXCELLENT NONE NONE IGI LG804650856 Comments: This Laboratory Grown Diamond was created by Chemical Vapor Deposition (CVD) growth process. Type IIa

June 11, 2026 IGI Report Number LG804650856 Description LABORATORY GROWN DIAMOND Shape and Cutting Style ROUND BRILLIANT Measurements 8.12 - 8.15 X 4.96 MM

GRADING RESULTS

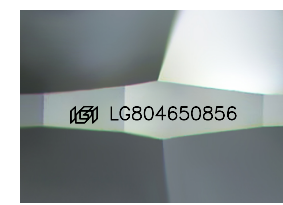
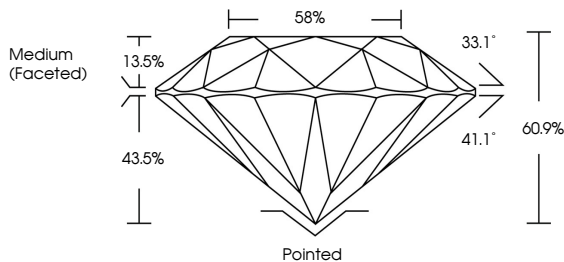
Carat Weight 2.02 CARATS Color Grade D Clarity Grade VVS 2 Cut Grade IDEAL

ADDITIONAL GRADING INFORMATION

Polish EXCELLENT Symmetry EXCELLENT Fluorescence NONE Inscription(s) IGI LG804650856

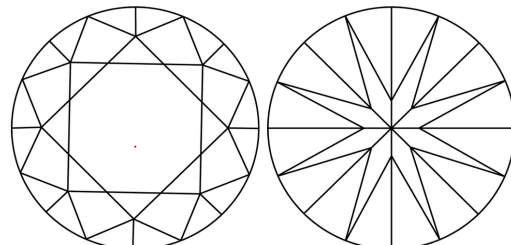
Comments: This Laboratory Grown Diamond was created by Chemical Vapor Deposition (CVD) growth process. Type IIa

PROPORTIONS



Sample Image Used

CLARITY CHARACTERISTICS



KEY TO SYMBOLS

Red symbols indicate internal characteristics. Green symbols indicate external characteristics.

COLOR

D E F G H I J Faint Very Light Light

CLARITY

FL IF VVS 1-2 VS 1-2 SI 1-2 I 1-3 Flawless Internally Flawless Very Very Slightly Included Very Slightly Included Slightly Included Included

