



June 26, 2026

IGI Report Number **LG804650222**

**PEAR BRILLIANT**

**LABORATORY GROWN DIAMOND**

**8.77 X 5.44 X 3.43 MM**

Carat Weight **0.95 CARAT**

Color Grade **E**

Clarity Grade **FLAWLESS**

Polish **EXCELLENT**

Symmetry **EXCELLENT**

Fluorescence **NONE**

Inscription(s) **IGI LG804650222**

Comments: As Grown - No indication of post-growth treatment. This Laboratory Grown Diamond was created by High Pressure High Temperature (HPHT) growth process. Type II

**LABORATORY GROWN DIAMOND REPORT**

June 26, 2026

IGI Report Number

**LG804650222**

Description

**LABORATORY GROWN DIAMOND**

Shape and Cutting Style

**PEAR BRILLIANT**

Measurements

**8.77 X 5.44 X 3.43 MM**

**GRADING RESULTS**

Carat Weight

**0.95 CARAT**

Color Grade

**E**

Clarity Grade

**FLAWLESS**

**ADDITIONAL GRADING INFORMATION**

Polish

**EXCELLENT**

Symmetry

**EXCELLENT**

Fluorescence

**NONE**

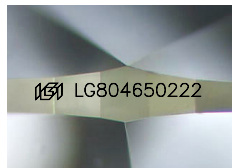
Inscription(s)

**IGI LG804650222**

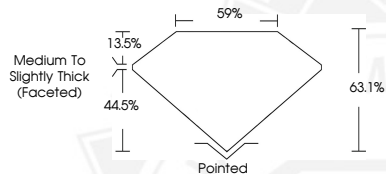
Comments: As Grown - No indication of post-growth treatment.

This Laboratory Grown Diamond was created by High Pressure High Temperature (HPHT) growth process.

Type II



Sample Image Used



June 26, 2026

IGI Report Number **LG804650222**

**PEAR BRILLIANT**

**LABORATORY GROWN DIAMOND**

**8.77 X 5.44 X 3.43 MM**

Carat Weight **0.95 CARAT**

Color Grade **E**

Clarity Grade **FLAWLESS**

Polish **EXCELLENT**

Symmetry **EXCELLENT**

Fluorescence **NONE**

Inscription(s) **IGI LG804650222**

Comments: As Grown - No indication of post-growth treatment. This Laboratory Grown Diamond was created by High Pressure High Temperature (HPHT) growth process. Type II



THIS DOCUMENT WAS PRODUCED WITH THE FOLLOWING SECURITY MEASURES: SPECIAL DOCUMENT PAPER, INK SCREENS, WATERMARK, BACKGROUND DESIGNS, HOLOGRAM AND OTHER SECURITY FEATURES NOT LISTED AND DO EXCEED DOCUMENT SECURITY INDUSTRY GUIDELINES.