



ELECTRONIC COPY

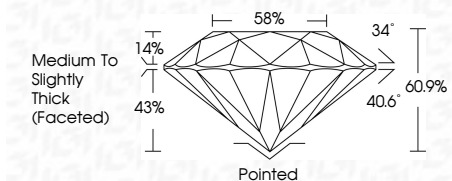
LG804649819 Report verification at igi.org



June 19, 2026 IGI Report Number LG804649819 Description LABORATORY GROWN DIAMOND Shape and Cutting Style ROUND BRILLIANT Measurements 6.53 - 6.56 X 3.99 MM

GRADING RESULTS

Carat Weight 1.06 CARAT Color Grade D Clarity Grade VVS 1 Cut Grade IDEAL



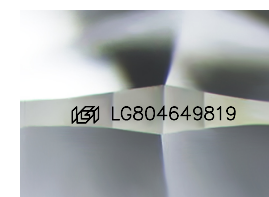
ADDITIONAL GRADING INFORMATION

Polish EXCELLENT Symmetry EXCELLENT Fluorescence NONE Inscription(s) LG804649819 Comments: As Grown - No indication of post-growth treatment. This Laboratory Grown Diamond was created by High Pressure High Temperature (HPHT) growth process. Type II



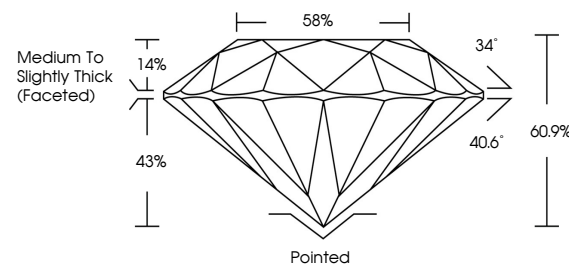
IGI

June 19, 2026 IGI Report No LG804649819 ROUND BRILLIANT 6.53 - 6.56 X 3.99 MM 1.06 CARAT D VVS 1 IDEAL 60.1% 88% Medium To Slightly Thick (Faceted) Pointed EXCELLENT EXCELLENT NONE NONE LG804649819 Comments: As Grown - No indication of post-growth treatment. This Laboratory Grown Diamond was created by High Pressure High Temperature (HPHT) growth process. Type II

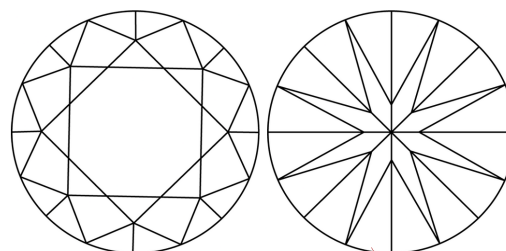


Sample Image Used

PROPORTIONS



CLARITY CHARACTERISTICS



KEY TO SYMBOLS

Red symbols indicate internal characteristics. Green symbols indicate external characteristics.

COLOR

D E F G H I J Faint Very Light Light

CLARITY

FL IF VVS 1-2 VS 1-2 SI 1-2 I 1-3 Flawless Internally Flawless Very Very Slightly Included Very Slightly Included Slightly Included Included

