



ELECTRONIC COPY

LG804649281
Report verification at igi.org



June 9, 2026

IGI Report Number **LG804649281**

Description **LABORATORY GROWN DIAMOND**

Shape and Cutting Style **MARQUISE BRILLIANT**

Measurements **13.74 X 7.01 X 4.47 MM**

GRADING RESULTS

Carat Weight **2.51 CARATS**

Color Grade **E**

Clarity Grade **VVS 2**

June 9, 2026

IGI Report Number **LG804649281**

Description **LABORATORY GROWN DIAMOND**

Shape and Cutting Style **MARQUISE BRILLIANT**

Measurements **13.74 X 7.01 X 4.47 MM**

GRADING RESULTS

Carat Weight **2.51 CARATS**

Color Grade **E**

Clarity Grade **VVS 2**

ADDITIONAL GRADING INFORMATION

Polish **EXCELLENT**

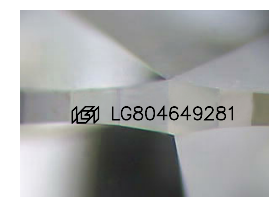
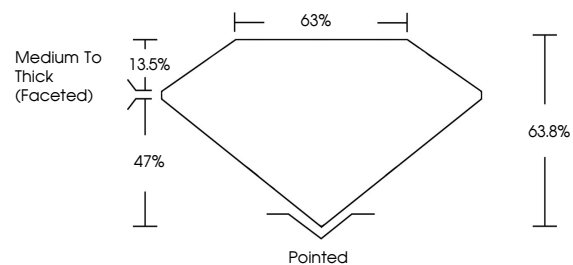
Symmetry **EXCELLENT**

Fluorescence **NONE**

Inscription(s) **IGI LG804649281**

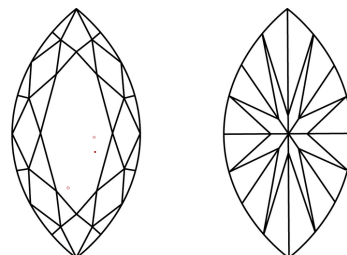
Comments: This Laboratory Grown Diamond was created by Chemical Vapor Deposition (CVD) growth process.
Type IIa

PROPORTIONS



Sample Image Used

CLARITY CHARACTERISTICS



KEY TO SYMBOLS

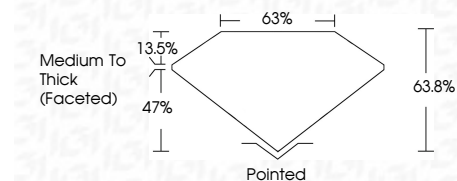
Red symbols indicate internal characteristics.
Green symbols indicate external characteristics.

COLOR

D E F G H I J Faint Very Light Light

CLARITY

FL	IF	VVS ¹⁻²	VS ¹⁻²	SI ¹⁻²	I ¹⁻³
Flawless	Internally Flawless	Very Very Slightly Included	Very Slightly Included	Slightly Included	Included



ADDITIONAL GRADING INFORMATION

Polish **EXCELLENT**

Symmetry **EXCELLENT**

Fluorescence **NONE**

Inscription(s) **IGI LG804649281**

Comments: This Laboratory Grown Diamond was created by Chemical Vapor Deposition (CVD) growth process.
Type IIa



June 9, 2026
IGI Report No. LG804649281
MARQUISE BRILLIANT

13.74 X 7.01 X 4.47 MM

2.51 CARATS
E

Carat Weight
Color Grade
Clarity Grade
Table
Girdle
Culet
Polish
Symmetry
Fluorescence
Inscription(s)

VVS 2
E
VVS 2
63.8%
47%
Medium To Thick (Faceted)
Pointed
EXCELLENT
EXCELLENT
NONE
IGI LG804649281

Comments: This Laboratory Grown Diamond was created by Chemical Vapor Deposition (CVD) growth process.
Type IIa