



ELECTRONIC COPY

LG804648020
Report verification at igi.org



May 29, 2026
IGI Report Number **LG804648020**
Description **LABORATORY GROWN DIAMOND**
Shape and Cutting Style **SQUARE CUSHION MODIFIED BRILLIANT**
Measurements **8.02 X 7.87 X 5.13 MM**
GRADING RESULTS
Carat Weight **3.05 CARATS**
Color Grade **FANCY INTENSE BLUE GREEN**
Clarity Grade **VS 2**

LABORATORY GROWN DIAMOND REPORT

May 29, 2026
IGI Report Number **LG804648020**
Description **LABORATORY GROWN DIAMOND**
Shape and Cutting Style **SQUARE CUSHION MODIFIED BRILLIANT**
Measurements **8.02 X 7.87 X 5.13 MM**

GRADING RESULTS

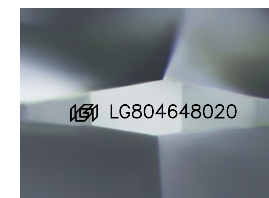
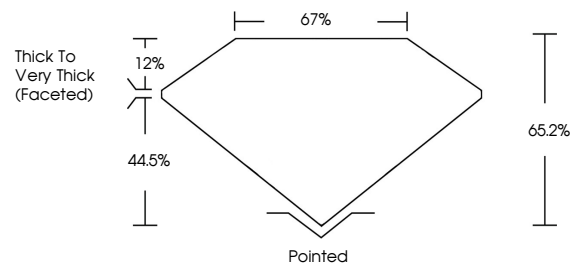
Carat Weight **3.05 CARATS**
Color Grade **FANCY INTENSE BLUE GREEN**
Clarity Grade **VS 2**

ADDITIONAL GRADING INFORMATION

Polish **EXCELLENT**
Symmetry **EXCELLENT**
Fluorescence **NONE**
Inscription(s) **IGI LG804648020**

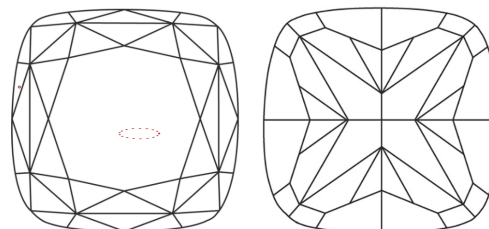
Comments: This Laboratory Grown Diamond was created by Chemical Vapor Deposition (CVD) growth process.
Indications of post-growth treatment.

PROPORTIONS



Sample Image Used

CLARITY CHARACTERISTICS



KEY TO SYMBOLS

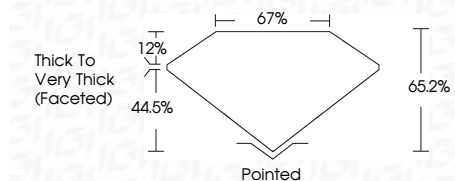
Red symbols indicate internal characteristics.
Green symbols indicate external characteristics.

COLOR

D E F G H I J Faint Very Light Light

CLARITY

FL	IF	VS ¹⁻²	VS ¹⁻²	SI ¹⁻²	I ¹⁻³
Flawless	Internally Flawless	Very Very Slightly Included	Very Slightly Included	Slightly Included	Included



ADDITIONAL GRADING INFORMATION

Polish **EXCELLENT**
Symmetry **EXCELLENT**
Fluorescence **NONE**
Inscription(s) **IGI LG804648020**
Comments: This Laboratory Grown Diamond was created by Chemical Vapor Deposition (CVD) growth process.
Indications of post-growth treatment.



May 29, 2026
IGI Report No. LG804648020
SQUARE CUSHION MODIFIED BRILLIANT
8.02 X 7.87 X 5.13 MM
3.05 CARATS
Carat Weight
Color Grade **FANCY INTENSE BLUE GREEN**
Clarity Grade **VS 2**
Depth **65.2%**
Table **67%**
Girdle
Thick to Very Thick (Faceted)
Culet Pointed
Polish **EXCELLENT**
Symmetry **EXCELLENT**
Fluorescence **NONE**
Inscription(s) **IGI LG804648020**
Comments: This Laboratory Grown Diamond was created by Chemical Vapor Deposition (CVD) growth process.
Indications of post-growth treatment.