



ELECTRONIC COPY

LG804643492
Report verification at igi.org



June 24, 2026

IGI Report Number **LG804643492**

Description **LABORATORY GROWN DIAMOND**

Shape and Cutting Style **CUT CORNERED
RECTANGULAR MODIFIED
BRILLIANT**

Measurements **8.71 X 6.11 X 4.11 MM**

GRADING RESULTS

Carat Weight **2.08 CARATS**

Color Grade **FANCY VIVID PINK**

Clarity Grade **VVS 2**

LABORATORY GROWN DIAMOND REPORT

June 24, 2026

IGI Report Number **LG804643492**

Description **LABORATORY GROWN DIAMOND**

Shape and Cutting Style **CUT CORNERED RECTANGULAR
MODIFIED BRILLIANT**

Measurements **8.71 X 6.11 X 4.11 MM**

GRADING RESULTS

Carat Weight **2.08 CARATS**

Color Grade **FANCY VIVID PINK**

Clarity Grade **VVS 2**

ADDITIONAL GRADING INFORMATION

Polish **EXCELLENT**

Symmetry **EXCELLENT**

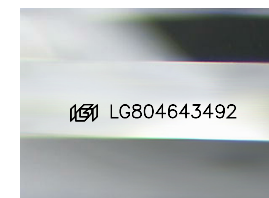
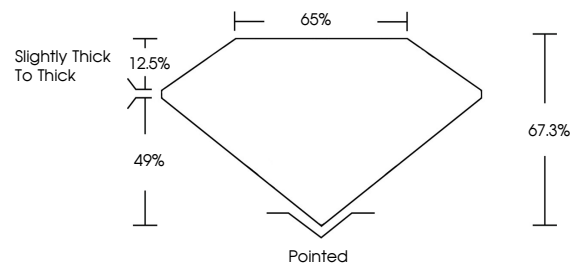
Fluorescence **SLIGHT**

Inscription(s) **IGI LG804643492**

Comments: This Laboratory Grown Diamond was created by Chemical Vapor Deposition (CVD) growth process.

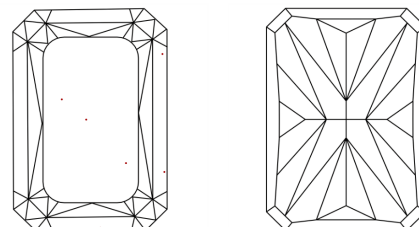
Indications of post-growth treatment.

PROPORTIONS



Sample Image Used

CLARITY CHARACTERISTICS



KEY TO SYMBOLS

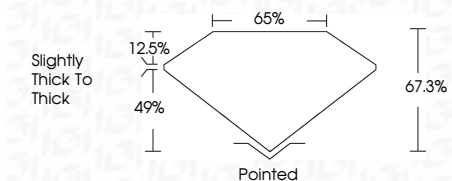
Red symbols indicate internal characteristics.
Green symbols indicate external characteristics.

COLOR

D E F G H I J Faint Very Light Light

CLARITY

FL	IF	VVS ¹⁻²	VS ¹⁻²	SI ¹⁻²	I ¹⁻³
Flawless	Internally Flawless	Very Very Slightly Included	Very Slightly Included	Slightly Included	Included



ADDITIONAL GRADING INFORMATION

Polish **EXCELLENT**

Symmetry **EXCELLENT**

Fluorescence **SLIGHT**

Inscription(s) **IGI LG804643492**

Comments: This Laboratory Grown Diamond was created by Chemical Vapor Deposition (CVD) growth process. Indications of post-growth treatment.



IGI



June 24, 2026
IGI Report No LG804643492
CUT CORNERED RECT. MODIFIED BRILLIANT

8.71 X 6.11 X 4.11 MM
2.08 CARATS
FANCY VIVID PINK
VVS 2
67.3%
65%
Slightly thick to thick

Pointed
EXCELLENT
EXCELLENT
SLIGHT
IGI LG804643492

Comments: This Laboratory Grown Diamond was created by Chemical Vapor Deposition (CVD) growth process. Indications of post-growth treatment.