



ELECTRONIC COPY

LG804643465
Report verification at igi.org



June 23, 2026

IGI Report Number **LG804643465**

Description **LABORATORY GROWN DIAMOND**

Shape and Cutting Style **HEART MODIFIED BRILLIANT**

Measurements **7.20 X 7.82 X 4.71 MM**

GRADING RESULTS

Carat Weight **2.01 CARATS**

Color Grade **FANCY INTENSE PINK**

Clarity Grade **SI 1**

June 23, 2026

IGI Report Number **LG804643465**

Description **LABORATORY GROWN DIAMOND**

Shape and Cutting Style **HEART MODIFIED BRILLIANT**

Measurements **7.20 X 7.82 X 4.71 MM**

GRADING RESULTS

Carat Weight **2.01 CARATS**

Color Grade **FANCY INTENSE PINK**

Clarity Grade **SI 1**

ADDITIONAL GRADING INFORMATION

Polish **EXCELLENT**

Symmetry **EXCELLENT**

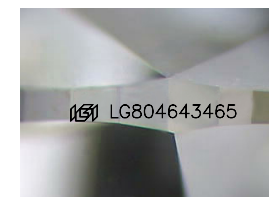
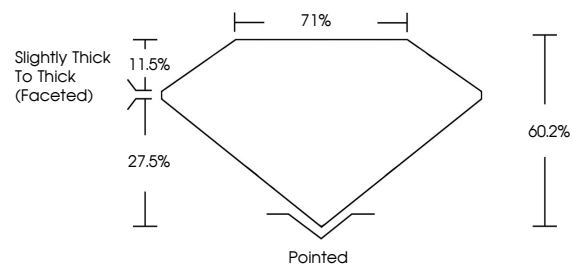
Fluorescence **SLIGHT**

Inscription(s) **IGI LG804643465**

Comments: This Laboratory Grown Diamond was created by Chemical Vapor Deposition (CVD) growth process.

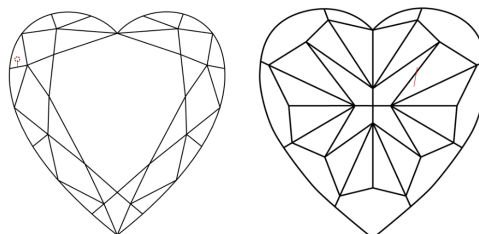
Indications of post-growth treatment.

PROPORTIONS



Sample Image Used

CLARITY CHARACTERISTICS



KEY TO SYMBOLS

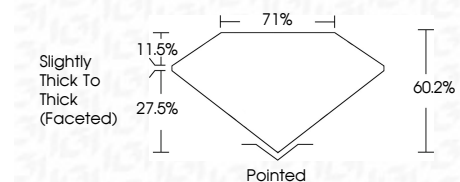
Red symbols indicate internal characteristics.
Green symbols indicate external characteristics.

COLOR

D E F G H I J Faint Very Light Light

CLARITY

FL	IF	VS ¹⁻²	VS ¹⁻²	SI ¹⁻²	I ¹⁻³
Flawless	Internally Flawless	Very Very Slightly Included	Very Slightly Included	Slightly Included	Included



ADDITIONAL GRADING INFORMATION

Polish **EXCELLENT**

Symmetry **EXCELLENT**

Fluorescence **SLIGHT**

Inscription(s) **IGI LG804643465**

Comments: This Laboratory Grown Diamond was created by Chemical Vapor Deposition (CVD) growth process. Indications of post-growth treatment.



June 23, 2026
IGI Report No LG804643465
HEART MODIFIED BRILLIANT

2.01 CARATS
FANCY INTENSE PINK

7.20 X 7.82 X 4.71 MM

SI 1
60.2%
71%
Slightly Thick To Thick (Faceted)

Pointed
EXCELLENT
EXCELLENT
SLIGHT
IGI LG804643465

Comments: This Laboratory Grown Diamond was created by Chemical Vapor Deposition (CVD) growth process. Indications of post-growth treatment.