



ELECTRONIC COPY

LG804643345
Report verification at igi.org



June 22, 2026
IGI Report Number **LG804643345**
Description **LABORATORY GROWN DIAMOND**
Shape and Cutting Style **SQUARE CUSHION MODIFIED BRILLIANT**
Measurements **8.64 X 8.29 X 5.41 MM**
GRADING RESULTS
Carat Weight **3.52 CARATS**
Color Grade **FANCY VIVID GREEN**
Clarity Grade **VVS 2**

LABORATORY GROWN DIAMOND REPORT

June 22, 2026
IGI Report Number **LG804643345**
Description **LABORATORY GROWN DIAMOND**
Shape and Cutting Style **SQUARE CUSHION MODIFIED BRILLIANT**
Measurements **8.64 X 8.29 X 5.41 MM**

GRADING RESULTS

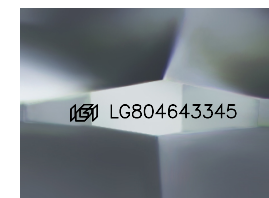
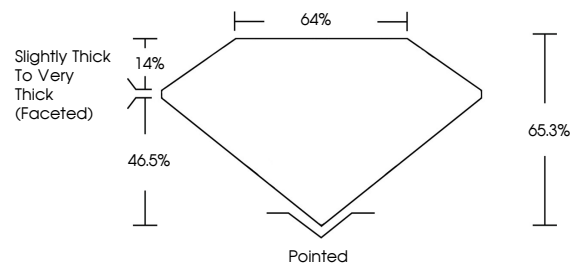
Carat Weight **3.52 CARATS**
Color Grade **FANCY VIVID GREEN**
Clarity Grade **VVS 2**

ADDITIONAL GRADING INFORMATION

Polish **EXCELLENT**
Symmetry **EXCELLENT**
Fluorescence **VERY SLIGHT**
Inscription(s) **LG804643345**

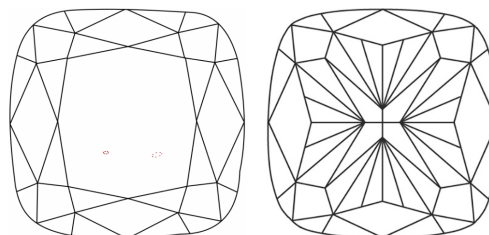
Comments: This Laboratory Grown Diamond was created by Chemical Vapor Deposition (CVD) growth process.
Indications of post-growth treatment.

PROPORTIONS



Sample Image Used

CLARITY CHARACTERISTICS



KEY TO SYMBOLS

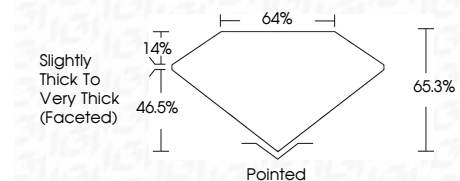
Red symbols indicate internal characteristics.
Green symbols indicate external characteristics.

COLOR

D E F G H I J Faint Very Light Light

CLARITY

FL	IF	VVS ¹⁻²	VS ¹⁻²	SI ¹⁻²	I ¹⁻³
Flawless	Internally Flawless	Very Very Slightly Included	Very Slightly Included	Slightly Included	Included



ADDITIONAL GRADING INFORMATION

Polish **EXCELLENT**
Symmetry **EXCELLENT**
Fluorescence **VERY SLIGHT**
Inscription(s) **LG804643345**
Comments: This Laboratory Grown Diamond was created by Chemical Vapor Deposition (CVD) growth process.
Indications of post-growth treatment.



June 22, 2026
IGI Report No. **LG804643345**
SQUARE CUSHION MODIFIED BRILLIANT
8.64 X 8.29 X 5.41 MM
Carat Weight **3.52 CARATS**
Color Grade **FANCY VIVID GREEN**
Clarity Grade **VVS 2**
Depth **46.5%**
Table **64%**
Girdle **Slightly Thick To Very Thick (Faceted)**
Culet **Pointed**
Polish **EXCELLENT**
Symmetry **EXCELLENT**
Fluorescence **VERY SLIGHT**
Inscription(s) **LG804643345**
Comments: This Laboratory Grown Diamond was created by Chemical Vapor Deposition (CVD) growth process.
Indications of post-growth treatment.