



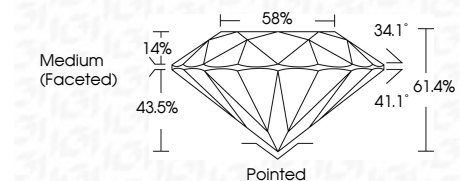
ELECTRONIC COPY

LG804642938
Report verification at igi.org



July 1, 2026
IGI Report Number **LG804642938**
Description **LABORATORY GROWN DIAMOND**
Shape and Cutting Style **ROUND BRILLIANT**
Measurements **6.92 - 6.99 X 4.27 MM**

GRADING RESULTS
Carat Weight **1.27 CARAT**
Color Grade **G**
Clarity Grade **VS 2**
Cut Grade **IDEAL**

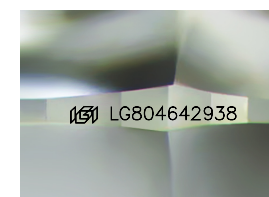


ADDITIONAL GRADING INFORMATION
Polish **EXCELLENT**
Symmetry **EXCELLENT**
Fluorescence **NONE**
Inscription(s) **IGI LG804642938**
Comments: This Laboratory Grown Diamond was created by Chemical Vapor Deposition (CVD) growth process. Type IIa



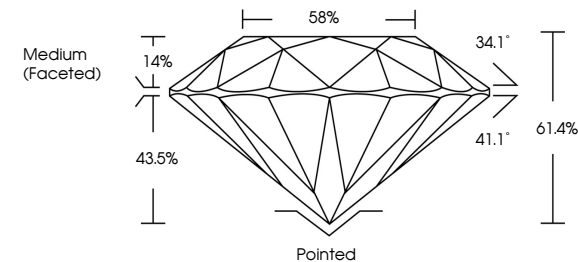
July 1, 2026	IGI Report No LG804642938	1.27 CARAT	G	VS 2	IDEAL	58%	Medium (Faceted)	Pointed	EXCELLENT	EXCELLENT	NONE	IGI LG804642938
ROUND BRILLIANT	6.92 - 6.99 X 4.27 MM	Color Grade	Cut Grade	Depth	Table	Girdle						

Comments: This Laboratory Grown Diamond was created by Chemical Vapor Deposition (CVD) growth process. Type IIa

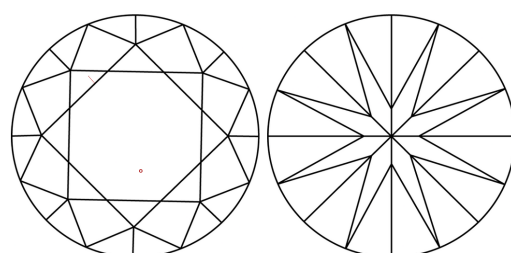


Sample Image Used

PROPORTIONS



CLARITY CHARACTERISTICS



KEY TO SYMBOLS
Red symbols indicate internal characteristics.
Green symbols indicate external characteristics.

COLOR

D	E	F	G	H	I	J	Faint	Very Light	Light
---	---	---	---	---	---	---	-------	------------	-------

CLARITY

FL	IF	VS ¹⁻²	VS ¹⁻²	SI ¹⁻²	I ¹⁻³
Flawless	Internally Flawless	Very Very Slightly Included	Very Slightly Included	Slightly Included	Included

