



ELECTRONIC COPY

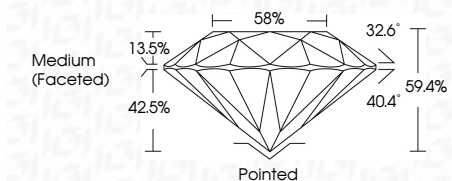
LG804642917
Report verification at igi.org



July 1, 2026
IGI Report Number **LG804642917**
Description **LABORATORY GROWN DIAMOND**
Shape and Cutting Style **ROUND BRILLIANT**
Measurements **7.52 - 7.58 X 4.48 MM**

GRADING RESULTS

Carat Weight **1.56 CARAT**
Color Grade **F**
Clarity Grade **SI 1**
Cut Grade **EXCELLENT**



ADDITIONAL GRADING INFORMATION

Polish **EXCELLENT**
Symmetry **EXCELLENT**
Fluorescence **NONE**
Inscription(s) **(IGI) LG804642917**
Comments: This Laboratory Grown Diamond was created by Chemical Vapor Deposition (CVD) growth process. Type IIa



IGI

July 1, 2026
IGI Report No LG804642917
ROUND BRILLIANT
7.52 - 7.58 X 4.48 MM
1.56 CARAT
F
SI 1
EXCELLENT
59.4%
58%
Medium (Faceted)
Pointed
EXCELLENT
EXCELLENT
NONE
(IGI) LG804642917
Comments: This Laboratory Grown Diamond was created by Chemical Vapor Deposition (CVD) growth process. Type IIa

July 1, 2026
IGI Report Number **LG804642917**
Description **LABORATORY GROWN DIAMOND**
Shape and Cutting Style **ROUND BRILLIANT**
Measurements **7.52 - 7.58 X 4.48 MM**

GRADING RESULTS

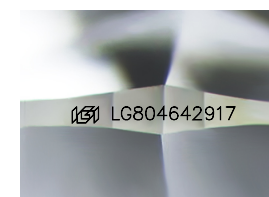
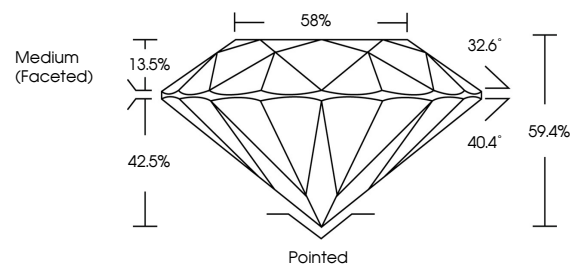
Carat Weight **1.56 CARAT**
Color Grade **F**
Clarity Grade **SI 1**
Cut Grade **EXCELLENT**

ADDITIONAL GRADING INFORMATION

Polish **EXCELLENT**
Symmetry **EXCELLENT**
Fluorescence **NONE**
Inscription(s) **(IGI) LG804642917**

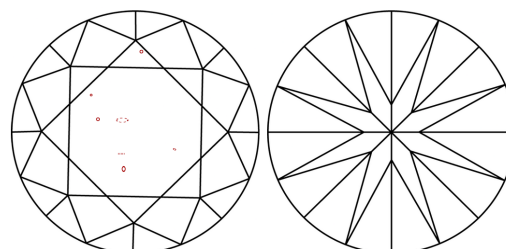
Comments: This Laboratory Grown Diamond was created by Chemical Vapor Deposition (CVD) growth process. Type IIa

PROPORTIONS



Sample Image Used

CLARITY CHARACTERISTICS



KEY TO SYMBOLS

Red symbols indicate internal characteristics.
Green symbols indicate external characteristics.

COLOR

D E F G H I J Faint Very Light Light

CLARITY

FL	IF	VS ¹⁻²	VS ¹⁻²	SI ¹⁻²	I ¹⁻³
Flawless	Internally Flawless	Very Very Slightly Included	Very Slightly Included	Slightly Included	Included

