



ELECTRONIC COPY

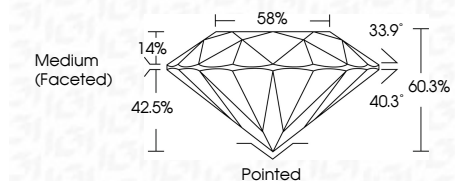
LG804642914
Report verification at igi.org



July 1, 2026
IGI Report Number **LG804642914**
Description **LABORATORY GROWN DIAMOND**
Shape and Cutting Style **ROUND BRILLIANT**
Measurements **6.45 - 6.52 X 3.91 MM**

GRADING RESULTS

Carat Weight **1.01 CARAT**
Color Grade **G**
Clarity Grade **VVS 2**
Cut Grade **IDEAL**

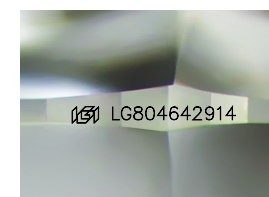


ADDITIONAL GRADING INFORMATION

Polish **EXCELLENT**
Symmetry **EXCELLENT**
Fluorescence **NONE**
Inscription(s) **IGI LG804642914**
Comments: This Laboratory Grown Diamond was created by Chemical Vapor Deposition (CVD) growth process. Type IIa

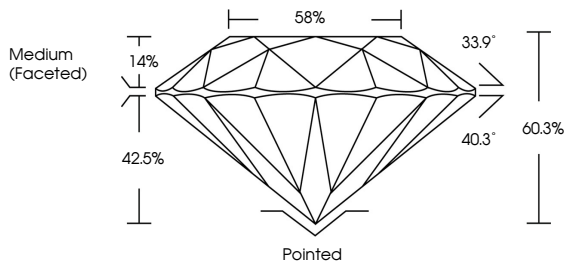


July 1, 2026
IGI Report No LG804642914
ROUND BRILLIANT
6.45 - 6.52 X 3.91 MM
1.01 CARAT
Color Grade **G**
Clarity Grade **VVS 2**
Cut Grade **IDEAL**
Depth **60.3%**
Table **58%**
Medium (Faceted)
Culet **Pointed**
Polish **EXCELLENT**
Symmetry **EXCELLENT**
Fluorescence **NONE**
Inscription(s) **IGI LG804642914**
Comments: This Laboratory Grown Diamond was created by Chemical Vapor Deposition (CVD) growth process. Type IIa

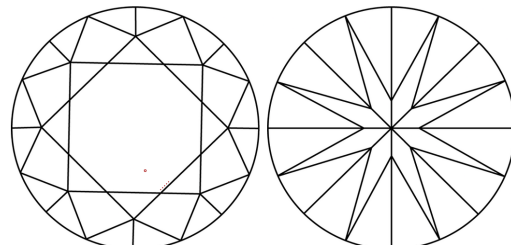


Sample Image Used

PROPORTIONS



CLARITY CHARACTERISTICS



KEY TO SYMBOLS

Red symbols indicate internal characteristics.
Green symbols indicate external characteristics.

COLOR

D E F G H I J Faint Very Light Light

CLARITY

FL	IF	VVS ¹⁻²	VS ¹⁻²	SI ¹⁻²	I ¹⁻³
Flawless	Internally Flawless	Very Very Slightly Included	Very Slightly Included	Slightly Included	Included

