



ELECTRONIC COPY

LG804642835
Report verification at igi.org



June 30, 2026
IGI Report Number **LG804642835**
Description **LABORATORY GROWN DIAMOND**
Shape and Cutting Style **CUT CORNERED RECTANGULAR MODIFIED BRILLIANT**
Measurements **7.64 X 5.09 X 3.52 MM**
GRADING RESULTS
Carat Weight **1.32 CARAT**
Color Grade **FANCY BROWN**
Clarity Grade **VVS 2**

LABORATORY GROWN DIAMOND REPORT

June 30, 2026
IGI Report Number **LG804642835**
Description **LABORATORY GROWN DIAMOND**
Shape and Cutting Style **CUT CORNERED RECTANGULAR MODIFIED BRILLIANT**
Measurements **7.64 X 5.09 X 3.52 MM**

GRADING RESULTS

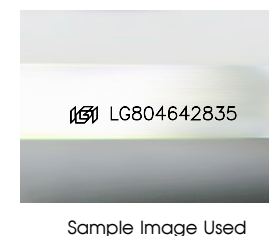
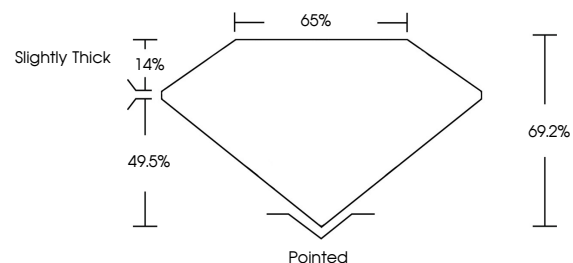
Carat Weight **1.32 CARAT**
Color Grade **FANCY BROWN**
Clarity Grade **VVS 2**

ADDITIONAL GRADING INFORMATION

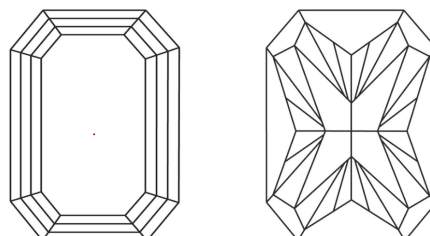
Polish **EXCELLENT**
Symmetry **EXCELLENT**
Fluorescence **VERY SLIGHT**
Inscription(s) **IGI LG804642835**

Comments: This Laboratory Grown Diamond was created by Chemical Vapor Deposition (CVD) growth process.
Indications of post-growth treatment.

PROPORTIONS



CLARITY CHARACTERISTICS



KEY TO SYMBOLS

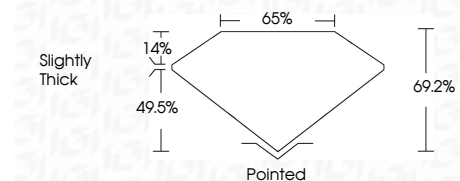
Red symbols indicate internal characteristics.
Green symbols indicate external characteristics.

COLOR

D E F G H I J Faint Very Light Light

CLARITY

FL IF VVS¹⁻² VS¹⁻² SI¹⁻² I¹⁻³
Flawless Internally Flawless Very Very Slightly Included Very Slightly Included Slightly Included Included



ADDITIONAL GRADING INFORMATION

Polish **EXCELLENT**
Symmetry **EXCELLENT**
Fluorescence **VERY SLIGHT**
Inscription(s) **IGI LG804642835**
Comments: This Laboratory Grown Diamond was created by Chemical Vapor Deposition (CVD) growth process.
Indications of post-growth treatment.



June 30, 2026
IGI Report No. **LG804642835**
CUT CORNERED RECT. MODIFIED BRILLIANT
7.64 X 5.09 X 3.52 MM
Carat Weight **1.32 CARAT**
Color Grade **FANCY BROWN**
Clarity Grade **VVS 2**
Depth **49.2%**
Table **1.4%**
Girdle **65%**
Slightly Thick
Culet **Pointed**
Polish **EXCELLENT**
Symmetry **EXCELLENT**
Fluorescence **VERY SLIGHT**
Inscription(s) **IGI LG804642835**
Comments: This Laboratory Grown Diamond was created by Chemical Vapor Deposition (CVD) growth process.
Indications of post-growth treatment.