



ELECTRONIC COPY

LG804639175
Report verification at igi.org



June 22, 2026
IGI Report Number **LG804639175**
Description **LABORATORY GROWN DIAMOND**
Shape and Cutting Style **SQUARE CUSHION MODIFIED BRILLIANT**
Measurements **9.22 X 9.14 X 6.04 MM**
GRADING RESULTS
Carat Weight **5.00 CARATS**
Color Grade **FANCY VIVID YELLOW**
Clarity Grade **VVS 2**

June 22, 2026
IGI Report Number **LG804639175**
Description **LABORATORY GROWN DIAMOND**
Shape and Cutting Style **SQUARE CUSHION MODIFIED BRILLIANT**
Measurements **9.22 X 9.14 X 6.04 MM**

GRADING RESULTS

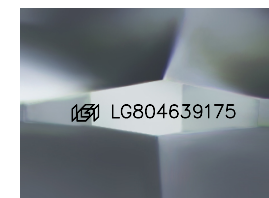
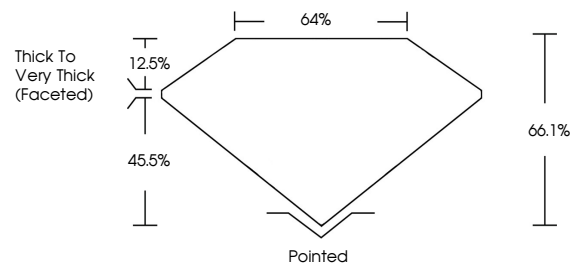
Carat Weight **5.00 CARATS**
Color Grade **FANCY VIVID YELLOW**
Clarity Grade **VVS 2**

ADDITIONAL GRADING INFORMATION

Polish **EXCELLENT**
Symmetry **EXCELLENT**
Fluorescence **NONE**
Inscription(s) **IGI LG804639175**

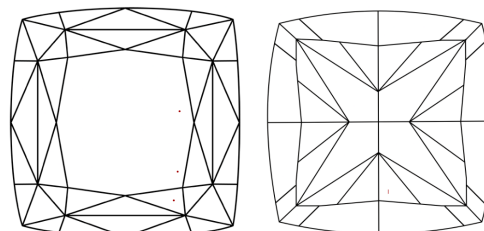
Comments: This Laboratory Grown Diamond was created by Chemical Vapor Deposition (CVD) growth process.

PROPORTIONS



Sample Image Used

CLARITY CHARACTERISTICS



KEY TO SYMBOLS

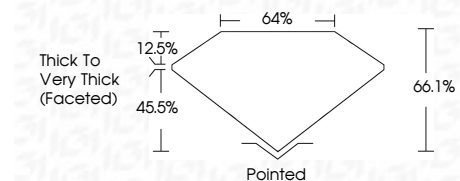
Red symbols indicate internal characteristics.
Green symbols indicate external characteristics.

COLOR

D E F G H I J Faint Very Light Light

CLARITY

FL	IF	VVS ¹⁻²	VS ¹⁻²	SI ¹⁻²	I ¹⁻³
Flawless	Internally Flawless	Very Very Slightly Included	Very Slightly Included	Slightly Included	Included



ADDITIONAL GRADING INFORMATION

Polish **EXCELLENT**
Symmetry **EXCELLENT**
Fluorescence **NONE**
Inscription(s) **IGI LG804639175**
Comments: This Laboratory Grown Diamond was created by Chemical Vapor Deposition (CVD) growth process.



IGI



June 22, 2026
IGI Report No. **LG804639175**
SQUARE CUSHION MODIFIED BRILLIANT
9.22 X 9.14 X 6.04 MM
5.00 CARATS
Carat Weight
Color Grade **FANCY VIVID YELLOW**
Clarity Grade **VVS 2**
Depth **66.1%**
Table **64%**
Girdle **Thick to Very Thick (Faceted)**
Culet **Pointed**
Polish **EXCELLENT**
Symmetry **EXCELLENT**
Fluorescence **NONE**
Inscription(s) **IGI LG804639175**
Comments: This Laboratory Grown Diamond was created by Chemical Vapor Deposition (CVD) growth process.