



ELECTRONIC COPY

LG804637024
Report verification at igi.org



June 19, 2026

IGI Report Number **LG804637024**

Description **LABORATORY GROWN DIAMOND**

Shape and Cutting Style **CUT CORNERED
RECTANGULAR MODIFIED
BRILLIANT**

Measurements **12.53 X 8.23 X 5.44 MM**

GRADING RESULTS

Carat Weight **5.01 CARATS**

Color Grade **FANCY INTENSE PINK**

Clarity Grade **VVS 2**

June 19, 2026
IGI Report Number **LG804637024**
Description **LABORATORY GROWN DIAMOND**
Shape and Cutting Style **CUT CORNERED RECTANGULAR
MODIFIED BRILLIANT**
Measurements **12.53 X 8.23 X 5.44 MM**

GRADING RESULTS

Carat Weight **5.01 CARATS**

Color Grade **FANCY INTENSE PINK**

Clarity Grade **VVS 2**

ADDITIONAL GRADING INFORMATION

Polish **EXCELLENT**

Symmetry **EXCELLENT**

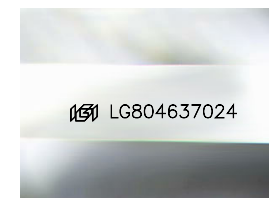
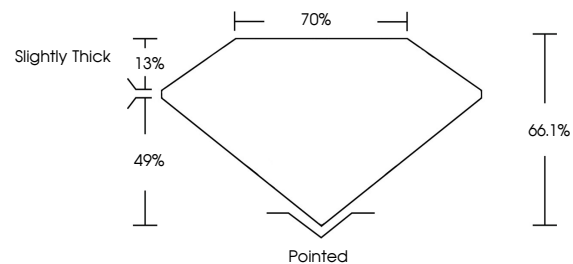
Fluorescence **STRONG**

Inscription(s) **IGI LG804637024**

Comments: This Laboratory Grown Diamond was created by Chemical Vapor Deposition (CVD) growth process.

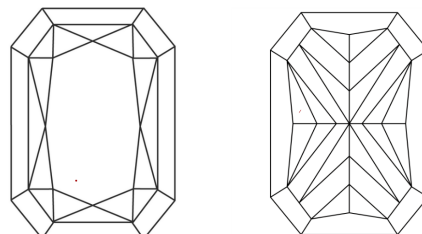
Indications of post-growth treatment.

PROPORTIONS



Sample Image Used

CLARITY CHARACTERISTICS



KEY TO SYMBOLS

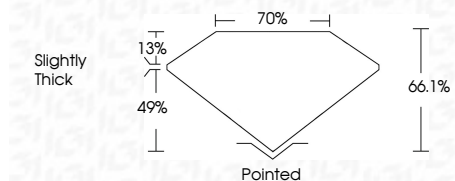
Red symbols indicate internal characteristics.
Green symbols indicate external characteristics.

COLOR

D E F G H I J Faint Very Light Light

CLARITY

FL	IF	VVS ¹⁻²	VS ¹⁻²	SI ¹⁻²	I ¹⁻³
Flawless	Internally Flawless	Very Very Slightly Included	Very Slightly Included	Slightly Included	Included



ADDITIONAL GRADING INFORMATION

Polish **EXCELLENT**

Symmetry **EXCELLENT**

Fluorescence **STRONG**

Inscription(s) **IGI LG804637024**

Comments: This Laboratory Grown Diamond was created by Chemical Vapor Deposition (CVD) growth process.

Indications of post-growth treatment.



IGI



June 19, 2026
IGI Report No LG804637024
CUT CORNERED RECT. MODIFIED BRILLIANT
12.53 X 8.23 X 5.44 MM
5.01 CARATS
FANCY INTENSE PINK
VVS 2
66.1%
70%
Slightly Thick
Pointed
EXCELLENT
EXCELLENT
STRONG
IGI LG804637024
Comments: This Laboratory Grown Diamond was created by Chemical Vapor Deposition (CVD) growth process.
Indications of post-growth treatment.