



ELECTRONIC COPY

LG804636398
Report verification at igi.org



June 24, 2026

IGI Report Number **LG804636398**

Description **LABORATORY GROWN DIAMOND**

Shape and Cutting Style **CUT CORNERED
RECTANGULAR MODIFIED
BRILLIANT**

Measurements **11.44 X 7.63 X 5.11 MM**

GRADING RESULTS

Carat Weight **4.03 CARATS**

Color Grade **FANCY INTENSE YELLOW**

Clarity Grade **VS 2**

June 24, 2026
IGI Report Number **LG804636398**
Description **LABORATORY GROWN DIAMOND**
Shape and Cutting Style **CUT CORNERED RECTANGULAR
MODIFIED BRILLIANT**
Measurements **11.44 X 7.63 X 5.11 MM**

GRADING RESULTS

Carat Weight **4.03 CARATS**

Color Grade **FANCY INTENSE YELLOW**

Clarity Grade **VS 2**

ADDITIONAL GRADING INFORMATION

Polish **EXCELLENT**

Symmetry **EXCELLENT**

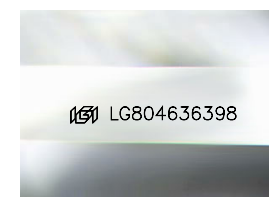
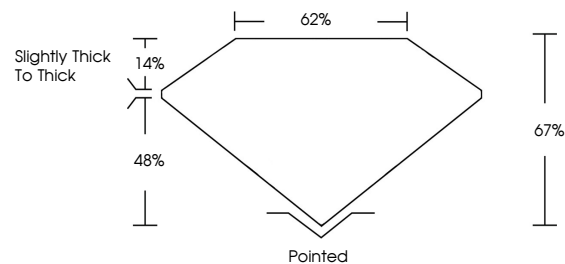
Fluorescence **NONE**

Inscription(s) **IGI LG804636398**

Comments: This Laboratory Grown Diamond was created by Chemical Vapor Deposition (CVD) growth process.

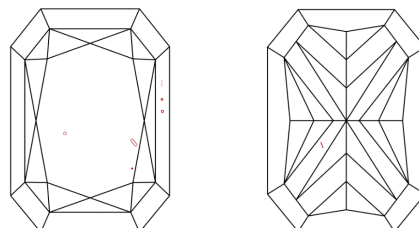
Indications of post-growth treatment.

PROPORTIONS



Sample Image Used

CLARITY CHARACTERISTICS



KEY TO SYMBOLS

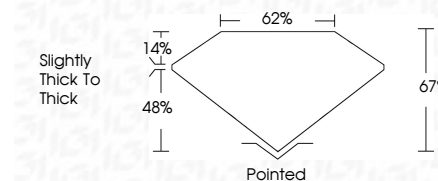
Red symbols indicate internal characteristics.
Green symbols indicate external characteristics.

COLOR

D E F G H I J Faint Very Light Light

CLARITY

FL	IF	VS ¹⁻²	VS ¹⁻²	SI ¹⁻²	I ¹⁻³
Flawless	Internally Flawless	Very Very Slightly Included	Very Slightly Included	Slightly Included	Included



ADDITIONAL GRADING INFORMATION

Polish **EXCELLENT**

Symmetry **EXCELLENT**

Fluorescence **NONE**

Inscription(s) **IGI LG804636398**

Comments: This Laboratory Grown Diamond was created by Chemical Vapor Deposition (CVD) growth process. Indications of post-growth treatment.



June 24, 2026
IGI Report No **LG804636398**
CUT CORNERED RECT. MODIFIED BRILLIANT
4.03 CARATS
Carat Weight
FANCY INTENSE YELLOW
Color Grade
VS 2
Clarity Grade
Depth **67%**
Table **62%**
Girdle **Slightly thick to thick**
Culet **Pointed**
Polish **EXCELLENT**
Symmetry **EXCELLENT**
Fluorescence **NONE**
Inscription(s) **IGI LG804636398**
Comments: This Laboratory Grown Diamond was created by Chemical Vapor Deposition (CVD) growth process. Indications of post-growth treatment.