



**ELECTRONIC COPY**

LG804636397  
Report verification at igi.org



June 15, 2026  
IGI Report Number **LG804636397**  
Description **LABORATORY GROWN DIAMOND**  
Shape and Cutting Style **CUSHION MODIFIED BRILLIANT**  
Measurements **9.75 X 7.06 X 4.77 MM**  
**GRADING RESULTS**  
Carat Weight **2.92 CARATS**  
Color Grade **VERY LIGHT BROWN**  
Clarity Grade **VVS 2**

June 15, 2026  
IGI Report Number **LG804636397**  
Description **LABORATORY GROWN DIAMOND**  
Shape and Cutting Style **CUSHION MODIFIED BRILLIANT**  
Measurements **9.75 X 7.06 X 4.77 MM**

**GRADING RESULTS**

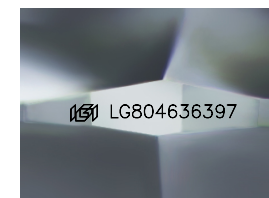
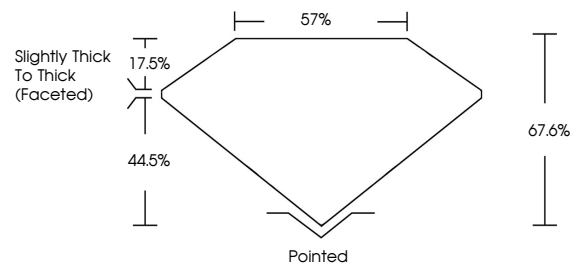
Carat Weight **2.92 CARATS**  
Color Grade **VERY LIGHT BROWN**  
Clarity Grade **VVS 2**

**ADDITIONAL GRADING INFORMATION**

Polish **EXCELLENT**  
Symmetry **EXCELLENT**  
Fluorescence **NONE**  
Inscription(s) **IGI LG804636397**

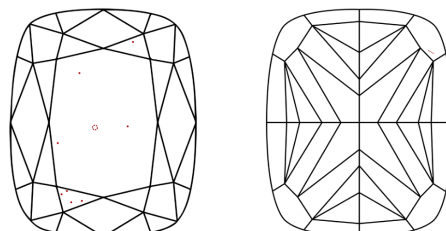
Comments: This Laboratory Grown Diamond was created by Chemical Vapor Deposition (CVD) growth process. Type IIa

**PROPORTIONS**



Sample Image Used

**CLARITY CHARACTERISTICS**



**KEY TO SYMBOLS**

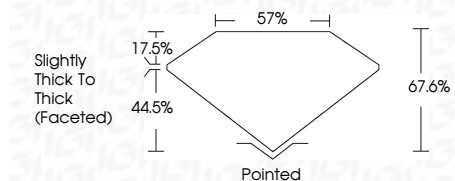
Red symbols indicate internal characteristics.  
Green symbols indicate external characteristics.

**COLOR**

D E F G H I J Faint Very Light Light

**CLARITY**

FL	IF	VVS <sup>1-2</sup>	VS <sup>1-2</sup>	SI <sup>1-2</sup>	I <sup>1-3</sup>
Flawless	Internally Flawless	Very Very Slightly Included	Very Slightly Included	Slightly Included	Included



**ADDITIONAL GRADING INFORMATION**

Polish **EXCELLENT**  
Symmetry **EXCELLENT**  
Fluorescence **NONE**  
Inscription(s) **IGI LG804636397**  
Comments: This Laboratory Grown Diamond was created by Chemical Vapor Deposition (CVD) growth process. Type IIa



June 15, 2026  
IGI Report No LG804636397  
CUSHION MODIFIED BRILLIANT  
2.92 CARATS  
Carat Weight  
Color Grade  
VERY LIGHT BROWN  
Clarity Grade  
VVS 2  
Depth  
9.75 X 7.06 X 4.77 MM  
Table  
57%  
Girdle  
Slightly Thick To Thick (Faceted)  
Culet  
Pointed  
Polish  
EXCELLENT  
Symmetry  
EXCELLENT  
Fluorescence  
NONE  
Inscription(s)  
IGI LG804636397  
Comments: This Laboratory Grown Diamond was created by Chemical Vapor Deposition (CVD) growth process. Type IIa