



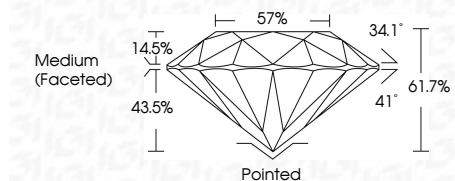
ELECTRONIC COPY

LG804625423
Report verification at igi.org



May 27, 2026
IGI Report Number **LG804625423**
Description **LABORATORY GROWN DIAMOND**
Shape and Cutting Style **ROUND BRILLIANT**
Measurements **6.96 - 7.00 X 4.31 MM**

GRADING RESULTS
Carat Weight **1.29 CARAT**
Color Grade **E**
Clarity Grade **VS 1**
Cut Grade **IDEAL**



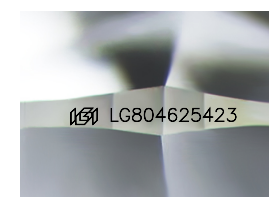
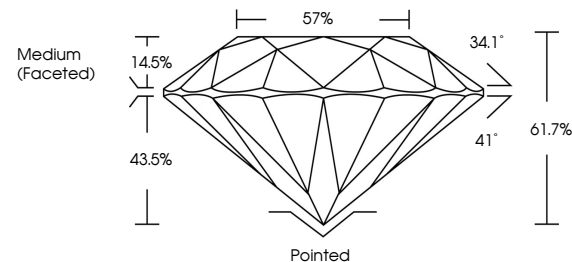
ADDITIONAL GRADING INFORMATION
Polish **EXCELLENT**
Symmetry **EXCELLENT**
Fluorescence **NONE**
Inscription(s) **IGI LG804625423**
Comments: This Laboratory Grown Diamond was created by Chemical Vapor Deposition (CVD) growth process. Type IIa



May 27, 2026
IGI Report No LG804625423
ROUND BRILLIANT
6.96 - 7.00 X 4.31 MM
1.29 CARAT
E
VS 1
IDEAL
61.7%
57%
Medium (Faceted)
Pointed
EXCELLENT
EXCELLENT
NONE
IGI LG804625423
Comments: This Laboratory Grown Diamond was created by Chemical Vapor Deposition (CVD) growth process. Type IIa

May 27, 2026
IGI Report Number **LG804625423**
Description **LABORATORY GROWN DIAMOND**
Shape and Cutting Style **ROUND BRILLIANT**
Measurements **6.96 - 7.00 X 4.31 MM**
GRADING RESULTS
Carat Weight **1.29 CARAT**
Color Grade **E**
Clarity Grade **VS 1**
Cut Grade **IDEAL**

PROPORTIONS



Sample Image Used

COLOR

D E F G H I J Faint Very Light Light

CLARITY

FL	IF	VS ¹⁻²	VS ¹⁻²	SI ¹⁻²	I ¹⁻³
Flawless	Internally Flawless	Very Very Slightly Included	Very Slightly Included	Slightly Included	Included

