



ELECTRONIC COPY

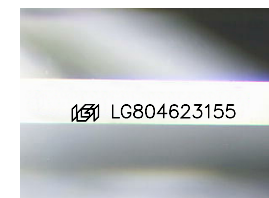
LG804623155
Report verification at igi.org



May 23, 2026
IGI Report Number **LG804623155**
Description **LABORATORY GROWN DIAMOND**

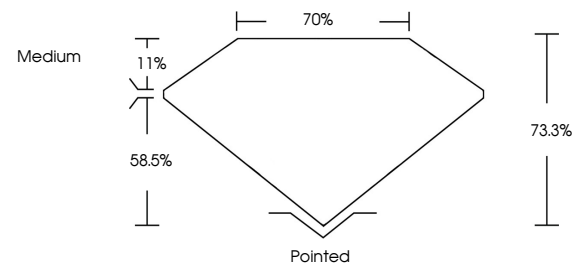
Shape and Cutting Style **PRINCESS CUT**
Measurements **9.59 X 9.26 X 6.79 MM**

GRADING RESULTS
Carat Weight **5.30 CARATS**
Color Grade **F**
Clarity Grade **VVS 1**

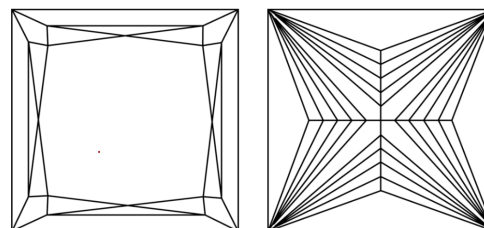


Sample Image Used

PROPORTIONS



CLARITY CHARACTERISTICS



KEY TO SYMBOLS

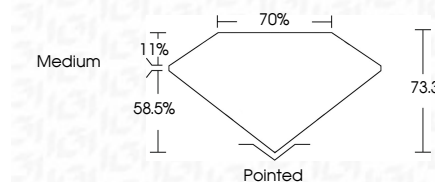
Red symbols indicate internal characteristics.
Green symbols indicate external characteristics.

COLOR

D E F G H I J Faint Very Light Light

CLARITY

FL	IF	VVS ¹⁻²	VS ¹⁻²	SI ¹⁻²	I ¹⁻³
Flawless	Internally Flawless	Very Very Slightly Included	Very Slightly Included	Slightly Included	Included



ADDITIONAL GRADING INFORMATION

Polish **EXCELLENT**
Symmetry **EXCELLENT**
Fluorescence **NONE**
Inscription(s) **(IGI) LG804623155**
Comments: This Laboratory Grown Diamond was created by Chemical Vapor Deposition (CVD) growth process. Type IIa



IGI



May 23, 2026
IGI Report No **LG804623155**
PRINCESS CUT
5.30 CARATS
Color Grade **F**
Clarity Grade **VVS 1**
Depth **58.5%**
Table **70%**
Girdle **Medium**
Culet **Pointed**
Polish **EXCELLENT**
Symmetry **EXCELLENT**
Fluorescence **NONE**
Inscription(s) **(IGI) LG804623155**
Comments: This Laboratory Grown Diamond was created by Chemical Vapor Deposition (CVD) growth process. Type IIa