



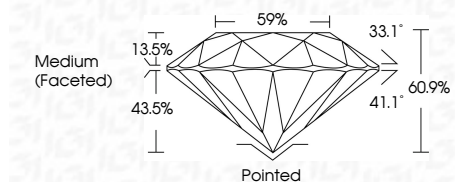
ELECTRONIC COPY

LG804619204 Report verification at igi.org



June 22, 2026 IGI Report Number LG804619204 Description LABORATORY GROWN DIAMOND Shape and Cutting Style ROUND BRILLIANT Measurements 9.35 - 9.40 X 5.70 MM

GRADING RESULTS Carat Weight 3.08 CARATS Color Grade F Clarity Grade VVS 2 Cut Grade IDEAL



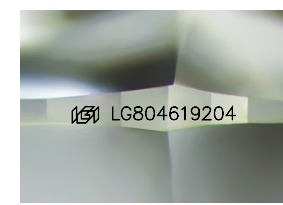
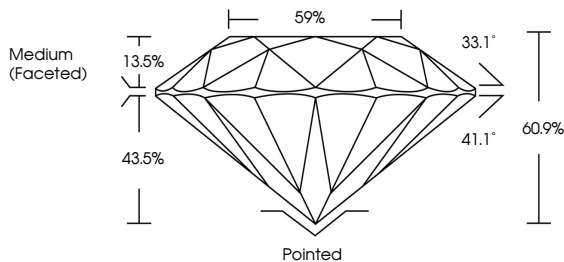
ADDITIONAL GRADING INFORMATION Polish EXCELLENT Symmetry EXCELLENT Fluorescence NONE Inscription(s) IGI LG804619204 Comments: This Laboratory Grown Diamond was created by Chemical Vapor Deposition (CVD) growth process. Type IIa



June 22, 2026 IGI Report No LG804619204 ROUND BRILLIANT 9.35 - 9.40 X 5.70 MM 3.08 CARATS F VVS 2 IDEAL 60.9% 59% Medium (Faceted) Pointed EXCELLENT EXCELLENT NONE NONE IGI LG804619204 Comments: This Laboratory Grown Diamond was created by Chemical Vapor Deposition (CVD) growth process. Type IIa

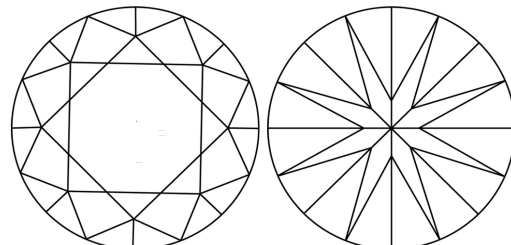
June 22, 2026 IGI Report Number LG804619204 Description LABORATORY GROWN DIAMOND Shape and Cutting Style ROUND BRILLIANT Measurements 9.35 - 9.40 X 5.70 MM GRADING RESULTS Carat Weight 3.08 CARATS Color Grade F Clarity Grade VVS 2 Cut Grade IDEAL ADDITIONAL GRADING INFORMATION Polish EXCELLENT Symmetry EXCELLENT Fluorescence NONE Inscription(s) IGI LG804619204

PROPORTIONS



Sample Image Used

CLARITY CHARACTERISTICS



KEY TO SYMBOLS Red symbols indicate internal characteristics. Green symbols indicate external characteristics.

Table with columns D, E, F, G, H, I, J, Faint, Very Light, Light

Table with columns FL, IF, VS 1-2, VS 1-2, SI 1-2, I 1-3 and corresponding descriptions: Flawless, Internally Flawless, Very Very Slightly Included, Very Slightly Included, Slightly Included, Included

