



ELECTRONIC COPY

LG804619157
Report verification at igi.org



June 12, 2026
IGI Report Number LG804619157
Description LABORATORY GROWN DIAMOND
Shape and Cutting Style ROUND BRILLIANT
Measurements 9.88 - 9.93 X 5.81 MM
GRADING RESULTS
Carat Weight 3.53 CARATS
Color Grade F
Clarity Grade VVS 2
Cut Grade EXCELLENT

June 12, 2026
IGI Report Number LG804619157
Description LABORATORY GROWN DIAMOND
Shape and Cutting Style ROUND BRILLIANT
Measurements 9.88 - 9.93 X 5.81 MM

GRADING RESULTS

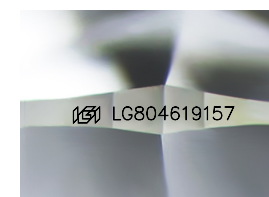
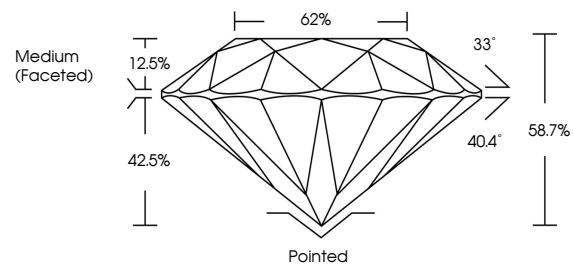
Carat Weight 3.53 CARATS
Color Grade F
Clarity Grade VVS 2
Cut Grade EXCELLENT

ADDITIONAL GRADING INFORMATION

Polish EXCELLENT
Symmetry EXCELLENT
Fluorescence NONE
Inscription(s) IGI LG804619157

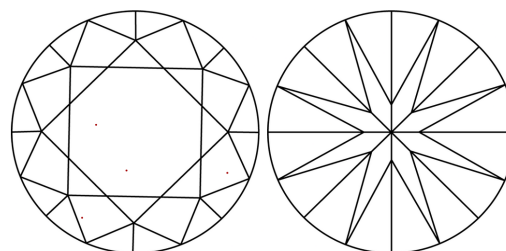
Comments: This Laboratory Grown Diamond was created by Chemical Vapor Deposition (CVD) growth process. Type IIa

PROPORTIONS



Sample Image Used

CLARITY CHARACTERISTICS



KEY TO SYMBOLS

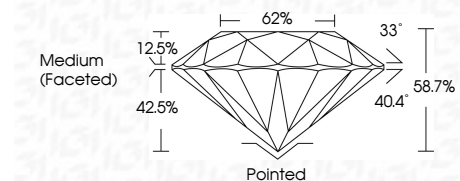
Red symbols indicate internal characteristics.
Green symbols indicate external characteristics.

COLOR

D E F G H I J Faint Very Light Light

CLARITY

FL IF VVS 1-2 VS 1-2 SI 1-2 I 1-3
Flawless Internally Flawless Very Very Slightly Included Very Slightly Included Slightly Included Included



ADDITIONAL GRADING INFORMATION

Polish EXCELLENT
Symmetry EXCELLENT
Fluorescence NONE
Inscription(s) IGI LG804619157
Comments: This Laboratory Grown Diamond was created by Chemical Vapor Deposition (CVD) growth process. Type IIa



June 12, 2026
IGI Report No LG804619157
ROUND BRILLIANT
9.88 - 9.93 X 5.81 MM
3.53 CARATS
F
VVS 2
EXCELLENT
62%
Medium (Faceted)
Pointed
EXCELLENT
EXCELLENT
NONE
IGI LG804619157
Comments: This Laboratory Grown Diamond was created by Chemical Vapor Deposition (CVD) growth process. Type IIa