



ELECTRONIC COPY

LG804618250
Report verification at igi.org



June 8, 2026
IGI Report Number LG804618250
Description LABORATORY GROWN DIAMOND
Shape and Cutting Style SQUARE CUSHION MODIFIED BRILLIANT
Measurements 6.95 X 6.91 X 4.42 MM
GRADING RESULTS
Carat Weight 2.02 CARATS
Color Grade FANCY VIVID PINK
Clarity Grade VVS 2

LABORATORY GROWN DIAMOND REPORT

June 8, 2026
IGI Report Number LG804618250
Description LABORATORY GROWN DIAMOND
Shape and Cutting Style SQUARE CUSHION MODIFIED BRILLIANT
Measurements 6.95 X 6.91 X 4.42 MM

GRADING RESULTS

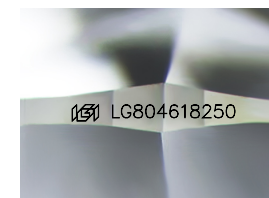
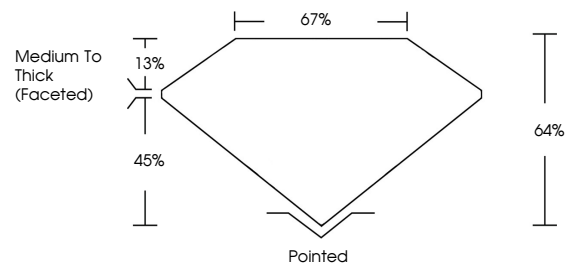
Carat Weight 2.02 CARATS
Color Grade FANCY VIVID PINK
Clarity Grade VVS 2

ADDITIONAL GRADING INFORMATION

Polish EXCELLENT
Symmetry VERY GOOD
Fluorescence SLIGHT
Inscription(s) LG804618250

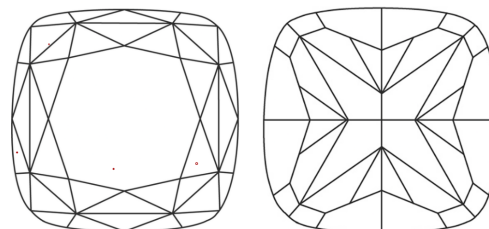
Comments: This Laboratory Grown Diamond was created by Chemical Vapor Deposition (CVD) growth process.
Indications of post-growth treatment.

PROPORTIONS



Sample Image Used

CLARITY CHARACTERISTICS



KEY TO SYMBOLS

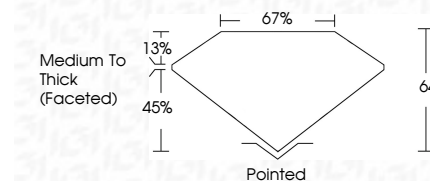
Red symbols indicate internal characteristics.
Green symbols indicate external characteristics.

COLOR

D E F G H I J Faint Very Light Light

CLARITY

FL IF VS 1-2 VS 1-2 SI 1-2 I 1-3
Flawless Internally Flawless Very Very Slightly Included Very Slightly Included Slightly Included Included



ADDITIONAL GRADING INFORMATION

Polish EXCELLENT
Symmetry VERY GOOD
Fluorescence SLIGHT
Inscription(s) LG804618250
Comments: This Laboratory Grown Diamond was created by Chemical Vapor Deposition (CVD) growth process.
Indications of post-growth treatment.



June 8, 2026
IGI Report No LG804618250
SQUARE CUSHION MODIFIED BRILLIANT
2.02 CARATS
Carat Weight 2.02 CARATS
Color Grade FANCY VIVID PINK
Clarity Grade VVS 2
Depth 64%
Table 67%
Girdle Medium To Thick (Faceted)
Culet Pointed
Polish EXCELLENT
Symmetry VERY GOOD
Fluorescence SLIGHT
Inscription(s) LG804618250
Comments: This Laboratory Grown Diamond was created by Chemical Vapor Deposition (CVD) growth process.
Indications of post-growth treatment.