



ELECTRONIC COPY

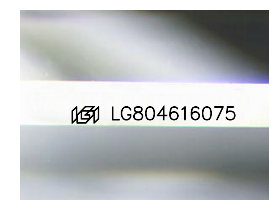
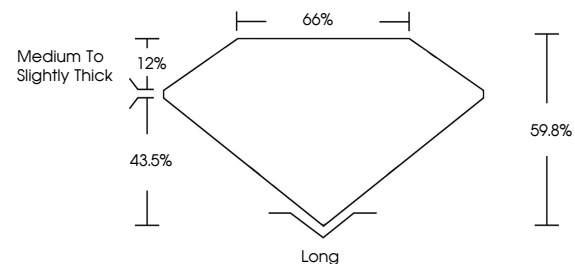
LG804616075
Report verification at igi.org



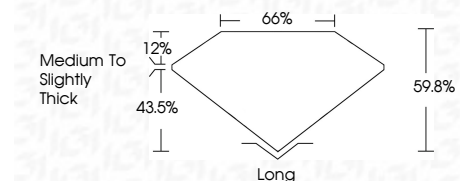
May 29, 2026
IGI Report Number **LG804616075**
Description **LABORATORY GROWN DIAMOND**
Shape and Cutting Style **HEXAGONAL MODIFIED STEP CUT**
Measurements **10.95 X 5.47 X 3.27 MM**
GRADING RESULTS
Carat Weight **1.54 CARAT**
Color Grade **D**
Clarity Grade **VVS 2**

May 29, 2026
IGI Report Number **LG804616075**
Description **LABORATORY GROWN DIAMOND**
Shape and Cutting Style **HEXAGONAL MODIFIED STEP CUT**
Measurements **10.95 X 5.47 X 3.27 MM**

PROPORTIONS



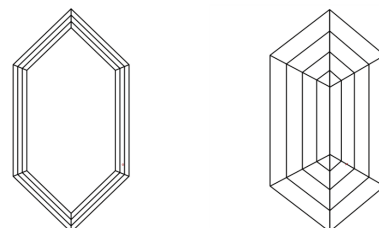
Sample Image Used



GRADING RESULTS

Carat Weight **1.54 CARAT**
Color Grade **D**
Clarity Grade **VVS 2**

CLARITY CHARACTERISTICS



KEY TO SYMBOLS

Red symbols indicate internal characteristics.
Green symbols indicate external characteristics.

COLOR

D E F G H I J Faint Very Light Light

CLARITY

FL	IF	VVS ¹⁻²	VS ¹⁻²	SI ¹⁻²	I ¹⁻³
Flawless	Internally Flawless	Very Very Slightly Included	Very Slightly Included	Slightly Included	Included

ADDITIONAL GRADING INFORMATION

Polish **EXCELLENT**
Symmetry **EXCELLENT**
Fluorescence **NONE**
Inscription(s) **IGI LG804616075**
Comments: This Laboratory Grown Diamond was created by Chemical Vapor Deposition (CVD) growth process. Type IIa

ADDITIONAL GRADING INFORMATION

Polish **EXCELLENT**
Symmetry **EXCELLENT**
Fluorescence **NONE**
Inscription(s) **IGI LG804616075**

Comments: This Laboratory Grown Diamond was created by Chemical Vapor Deposition (CVD) growth process. Type IIa



May 29, 2026
IGI Report No. LG804616075
HEXAGONAL MODIFIED STEP CUT
1.54 CARAT
D
VVS 2
66%
43.5%
59.8%
Medium to Slightly Thick
Long
EXCELLENT
EXCELLENT
NONE
IGI LG804616075
Comments: This Laboratory Grown Diamond was created by Chemical Vapor Deposition (CVD) growth process. Type IIa