



ELECTRONIC COPY

LG804615975
Report verification at igi.org



May 26, 2026

IGI Report Number **LG804615975**

Description **LABORATORY GROWN DIAMOND**

Shape and Cutting Style **PRINCESS CUT**

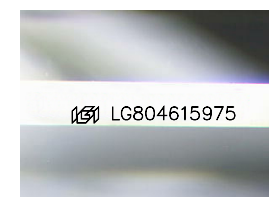
Measurements **7.06 X 6.97 X 5.00 MM**

GRADING RESULTS

Carat Weight **2.06 CARATS**

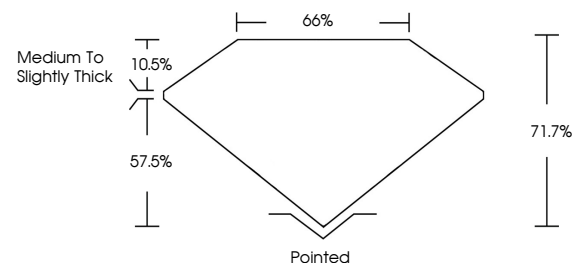
Color Grade **E**

Clarity Grade **VS 1**

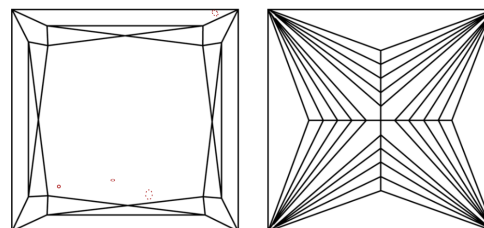


Sample Image Used

PROPORTIONS



CLARITY CHARACTERISTICS



KEY TO SYMBOLS

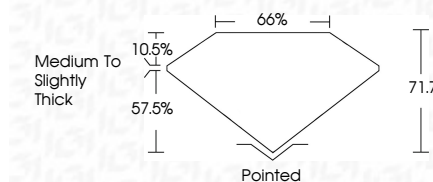
Red symbols indicate internal characteristics.
Green symbols indicate external characteristics.

COLOR

D E F G H I J Faint Very Light Light

CLARITY

FL	IF	VS ¹⁻²	VS ¹⁻²	SI ¹⁻²	I ¹⁻³
Flawless	Internally Flawless	Very Very Slightly Included	Very Slightly Included	Slightly Included	Included



ADDITIONAL GRADING INFORMATION

Polish **EXCELLENT**

Symmetry **EXCELLENT**

Fluorescence **NONE**

Inscription(s) **IGI LG804615975**

Comments: This Laboratory Grown Diamond was created by Chemical Vapor Deposition (CVD) growth process. Type IIa



IGI



May 26, 2026
IGI Report No. LG804615975
PRINCESS CUT

2.06 CARATS
E

7.06 X 6.97 X 5.00 MM
Color Grade
Clarity Grade
Table
Depth
Girdle
Medium to Slightly Thick

VS 1
71.7%
66%
Pointed
EXCELLENT
EXCELLENT
NONE
IGI LG804615975

Culet
Polish
Symmetry
Fluorescence
Inscription(s)

Comments: This Laboratory Grown Diamond was created by Chemical Vapor Deposition (CVD) growth process. Type IIa