



**ELECTRONIC COPY**

LG804612784  
Report verification at igi.org



May 28, 2026

IGI Report Number **LG804612784**

Description **LABORATORY GROWN DIAMOND**

Shape and Cutting Style **HEART BRILLIANT**

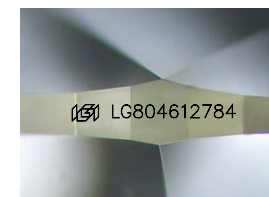
Measurements **5.98 X 7.05 X 4.20 MM**

**GRADING RESULTS**

Carat Weight **1.01 CARAT**

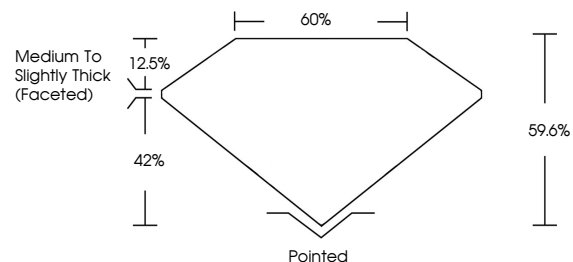
Color Grade **E**

Clarity Grade **VVS 1**

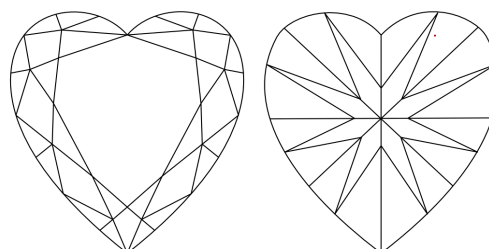


Sample Image Used

**PROPORTIONS**



**CLARITY CHARACTERISTICS**



**KEY TO SYMBOLS**

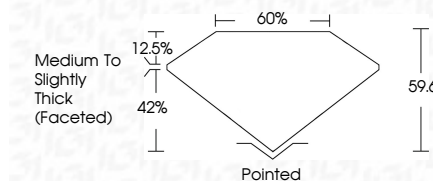
Red symbols indicate internal characteristics.  
Green symbols indicate external characteristics.

**COLOR**

D E F G H I J Faint Very Light Light

**CLARITY**

FL	IF	VVS <sup>1-2</sup>	VS <sup>1-2</sup>	SI <sup>1-2</sup>	I <sup>1-3</sup>
Flawless	Internally Flawless	Very Very Slightly Included	Very Slightly Included	Slightly Included	Included



**ADDITIONAL GRADING INFORMATION**

Polish **EXCELLENT**

Symmetry **EXCELLENT**

Fluorescence **NONE**

Inscription(s) **IGI LG804612784**

Comments: This Laboratory Grown Diamond was created by Chemical Vapor Deposition (CVD) growth process. Type IIa



**IGI**



May 28, 2026	1.01 CARAT	E	VVS 1	60%	42%	Medium to Slightly Thick (Faceted)	Pointed	EXCELLENT	EXCELLENT	NONE	IGI LG804612784	
IGI Report No LG804612784	HEART BRILLIANT	5.98 X 7.05 X 4.20 MM	Color Grade	Clarity Grade	Table	Depth	Girdle	Culet	Polish	Symmetry	Fluorescence	Inscription(s)
<p>Comments: This Laboratory Grown Diamond was created by Chemical Vapor Deposition (CVD) growth process. Type IIa</p>												