



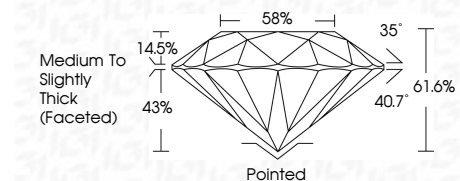
ELECTRONIC COPY

LG804611344 Report verification at igi.org



May 28, 2026 IGI Report Number LG804611344 Description LABORATORY GROWN DIAMOND Shape and Cutting Style ROUND BRILLIANT Measurements 8.04 - 8.09 X 4.97 MM

GRADING RESULTS Carat Weight 2.01 CARATS Color Grade D Clarity Grade VVS 2 Cut Grade IDEAL



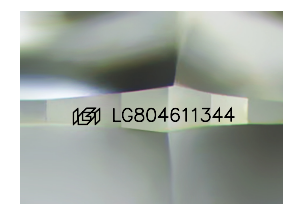
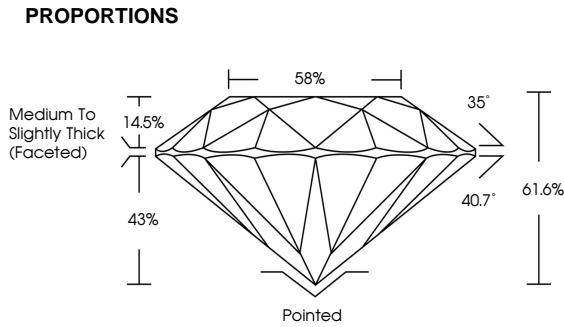
ADDITIONAL GRADING INFORMATION Polish EXCELLENT Symmetry EXCELLENT Fluorescence NONE Inscription(s) LG804611344 Comments: As Grown - No indication of post-growth treatment. This Laboratory Grown Diamond was created by High Pressure High Temperature (HPHT) growth process. Type II



May 28, 2026 IGI Report No LG804611344 ROUND BRILLIANT 2.01 CARATS D 8.04 - 8.09 X 4.97 MM VVS 2 IDEAL 61.6% 58% Medium To Slightly Thick (Faceted) Pointed EXCELLENT EXCELLENT NONE NONE LG804611344

May 28, 2026 IGI Report Number LG804611344 Description LABORATORY GROWN DIAMOND Shape and Cutting Style ROUND BRILLIANT Measurements 8.04 - 8.09 X 4.97 MM GRADING RESULTS Carat Weight 2.01 CARATS Color Grade D Clarity Grade VVS 2 Cut Grade IDEAL

ADDITIONAL GRADING INFORMATION Polish EXCELLENT Symmetry EXCELLENT Fluorescence NONE Inscription(s) LG804611344 Comments: As Grown - No indication of post-growth treatment. This Laboratory Grown Diamond was created by High Pressure High Temperature (HPHT) growth process. Type II



Sample Image Used

Table with columns for Color grades: D, E, F, G, H, I, J, Faint, Very Light, Light

Table with columns for Clarity grades: FL, IF, VVS 1-2, VS 1-2, SI 1-2, I 1-3

