



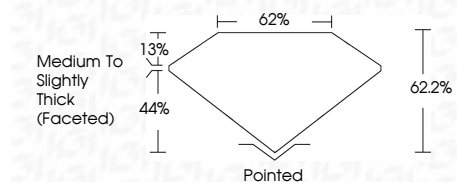
ELECTRONIC COPY

LG804607451
Report verification at igi.org



May 25, 2026
IGI Report Number **LG804607451**
Description **LABORATORY GROWN DIAMOND**
Shape and Cutting Style **OVAL BRILLIANT**
Measurements **12.32 X 8.50 X 5.29 MM**

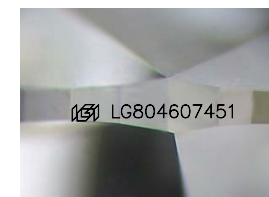
GRADING RESULTS
Carat Weight **3.53 CARATS**
Color Grade **E**
Clarity Grade **VS 1**



ADDITIONAL GRADING INFORMATION
Polish **EXCELLENT**
Symmetry **EXCELLENT**
Fluorescence **NONE**
Inscription(s) **IGI LG804607451**
Comments: This Laboratory Grown Diamond was created by Chemical Vapor Deposition (CVD) growth process. Type IIa

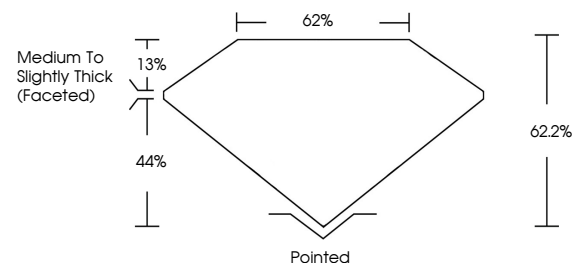


May 25, 2026
IGI Report No LG804607451
OVAL BRILLIANT
Carat Weight **3.53 CARATS**
Color Grade **E**
Clarity Grade **VS 1**
Depth **44%**
Table **13%**
Girdle **Medium to Slightly Thick (Faceted)**
Culet **Pointed**
Polish **EXCELLENT**
Symmetry **EXCELLENT**
Fluorescence **NONE**
Inscription(s) **IGI LG804607451**
Comments: This Laboratory Grown Diamond was created by Chemical Vapor Deposition (CVD) growth process. Type IIa

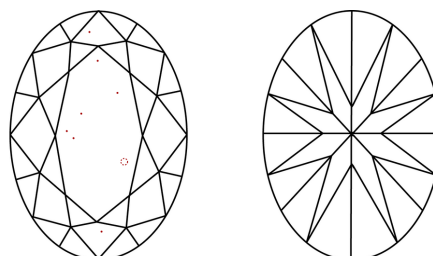


Sample Image Used

PROPORTIONS



CLARITY CHARACTERISTICS



KEY TO SYMBOLS

Red symbols indicate internal characteristics.
Green symbols indicate external characteristics.

COLOR

D E F G H I J Faint Very Light Light

CLARITY

FL	IF	VS ¹⁻²	VS ¹⁻²	SI ¹⁻²	I ¹⁻³
Flawless	Internally Flawless	Very Very Slightly Included	Very Slightly Included	Slightly Included	Included

