



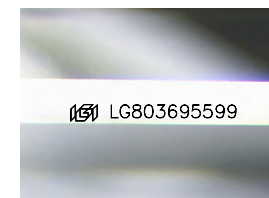
ELECTRONIC COPY

LG803695599
Report verification at igi.org



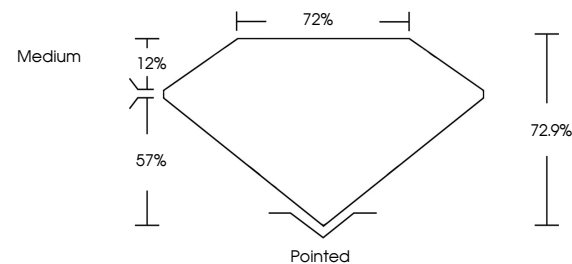
May 26, 2026
IGI Report Number **LG803695599**
Description **LABORATORY GROWN DIAMOND**
Shape and Cutting Style **PRINCESS CUT**
Measurements **6.84 X 6.78 X 4.94 MM**

GRADING RESULTS
Carat Weight **2.02 CARATS**
Color Grade **D**
Clarity Grade **VVS 1**

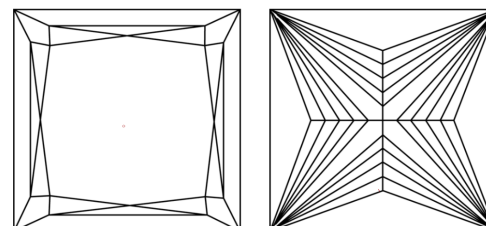


Sample Image Used

PROPORTIONS



CLARITY CHARACTERISTICS



KEY TO SYMBOLS

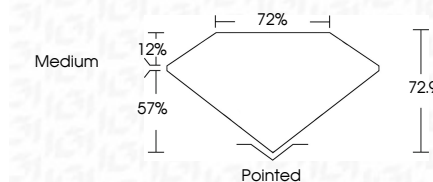
Red symbols indicate internal characteristics.
Green symbols indicate external characteristics.

COLOR

D E F G H I J Faint Very Light Light

CLARITY

FL	IF	VVS ¹⁻²	VS ¹⁻²	SI ¹⁻²	I ¹⁻³
Flawless	Internally Flawless	Very Very Slightly Included	Very Slightly Included	Slightly Included	Included



ADDITIONAL GRADING INFORMATION

Polish **EXCELLENT**
Symmetry **EXCELLENT**
Fluorescence **NONE**
Inscription(s) **IGI LG803695599**
Comments: As Grown - No indication of post-growth treatment.
This Laboratory Grown Diamond was created by High Pressure High Temperature (HPHT) growth process.
Type II



IGI



May 26, 2026
IGI Report No. LG803695599
PRINCESS CUT
6.84 X 6.78 X 4.94 MM
2.02 CARATS
D
Color Grade
Clarity Grade
Depth
Table
Girdle
Medium
Pointed
EXCELLENT
EXCELLENT
NONE
IGI LG803695599
Comments: As Grown - No indication of post-growth treatment.
This Laboratory Grown Diamond was created by High Pressure High Temperature (HPHT) growth process.
Type II