



**ELECTRONIC COPY**

LG803693759  
Report verification at [igi.org](http://igi.org)



June 3, 2026  
IGI Report Number **LG803693759**  
Description **LABORATORY GROWN DIAMOND**  
Shape and Cutting Style **CUSHION MODIFIED BRILLIANT**  
Measurements **12.75 X 8.38 X 5.91 MM**  
**GRADING RESULTS**  
Carat Weight **5.03 CARATS**  
Color Grade **FANCY VIVID PINK**  
Clarity Grade **VS 1**

June 3, 2026  
IGI Report Number **LG803693759**  
Description **LABORATORY GROWN DIAMOND**  
Shape and Cutting Style **CUSHION MODIFIED BRILLIANT**  
Measurements **12.75 X 8.38 X 5.91 MM**

**GRADING RESULTS**

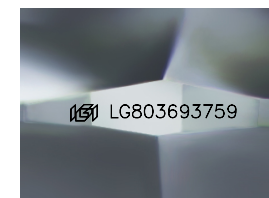
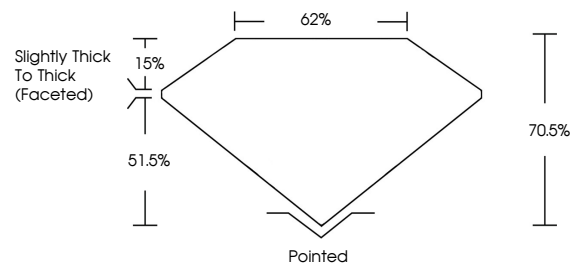
Carat Weight **5.03 CARATS**  
Color Grade **FANCY VIVID PINK**  
Clarity Grade **VS 1**

**ADDITIONAL GRADING INFORMATION**

Polish **EXCELLENT**  
Symmetry **EXCELLENT**  
Fluorescence **STRONG**  
Inscription(s) **IGI LG803693759**

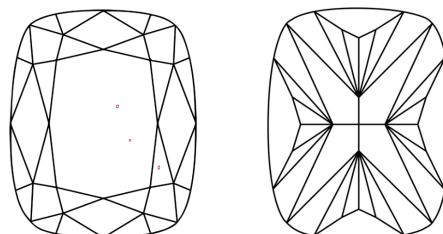
Comments: This Laboratory Grown Diamond was created by Chemical Vapor Deposition (CVD) growth process.  
Indications of post-growth treatment.

**PROPORTIONS**



Sample Image Used

**CLARITY CHARACTERISTICS**



**KEY TO SYMBOLS**

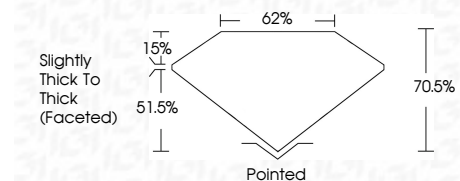
Red symbols indicate internal characteristics.  
Green symbols indicate external characteristics.

**COLOR**

D E F G H I J Faint Very Light Light

**CLARITY**

FL	IF	VS <sup>1-2</sup>	VS <sup>1-2</sup>	SI <sup>1-2</sup>	I <sup>1-3</sup>
Flawless	Internally Flawless	Very Very Slightly Included	Very Slightly Included	Slightly Included	Included



**ADDITIONAL GRADING INFORMATION**

Polish **EXCELLENT**  
Symmetry **EXCELLENT**  
Fluorescence **STRONG**  
Inscription(s) **IGI LG803693759**  
Comments: This Laboratory Grown Diamond was created by Chemical Vapor Deposition (CVD) growth process.  
Indications of post-growth treatment.



June 3, 2026  
IGI Report No **LG803693759**  
**CUSHION MODIFIED BRILLIANT**  
12.75 X 8.38 X 5.91 MM  
5.03 CARATS  
FANCY VIVID PINK  
VS 1  
70.5%  
62%  
Slightly Thick To Thick (Faceted)  
Pointed  
EXCELLENT  
EXCELLENT  
STRONG  
IGI LG803693759  
Comments: This Laboratory Grown Diamond was created by Chemical Vapor Deposition (CVD) growth process.  
Indications of post-growth treatment.