



ELECTRONIC COPY

LG803693745
Report verification at igi.org



June 1, 2026
IGI Report Number **LG803693745**
Description **LABORATORY GROWN DIAMOND**
Shape and Cutting Style **CUSHION MODIFIED BRILLIANT**
Measurements **8.42 X 7.71 X 5.02 MM**
GRADING RESULTS
Carat Weight **3.05 CARATS**
Color Grade **FANCY DEEP BROWNISH PINK**
Clarity Grade **VS 2**

LABORATORY GROWN DIAMOND REPORT

June 1, 2026
IGI Report Number **LG803693745**
Description **LABORATORY GROWN DIAMOND**
Shape and Cutting Style **CUSHION MODIFIED BRILLIANT**
Measurements **8.42 X 7.71 X 5.02 MM**

GRADING RESULTS

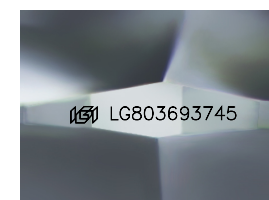
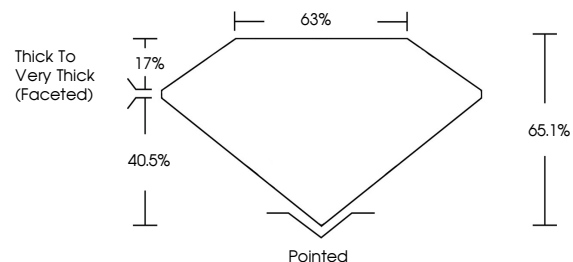
Carat Weight **3.05 CARATS**
Color Grade **FANCY DEEP BROWNISH PINK**
Clarity Grade **VS 2**

ADDITIONAL GRADING INFORMATION

Polish **EXCELLENT**
Symmetry **EXCELLENT**
Fluorescence **SLIGHT**
Inscription(s) **IGI LG803693745**

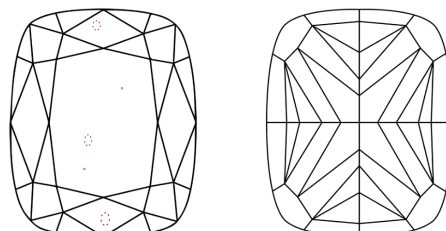
Comments: This Laboratory Grown Diamond was created by Chemical Vapor Deposition (CVD) growth process.
Indications of post-growth treatment.

PROPORTIONS



Sample Image Used

CLARITY CHARACTERISTICS



KEY TO SYMBOLS

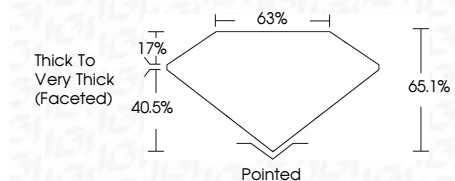
Red symbols indicate internal characteristics.
Green symbols indicate external characteristics.

COLOR

D E F G H I J Faint Very Light Light

CLARITY

FL	IF	VS ¹⁻²	VS ¹⁻²	SI ¹⁻²	I ¹⁻³
Flawless	Internally Flawless	Very Very Slightly Included	Very Slightly Included	Slightly Included	Included



ADDITIONAL GRADING INFORMATION

Polish **EXCELLENT**
Symmetry **EXCELLENT**
Fluorescence **SLIGHT**
Inscription(s) **IGI LG803693745**
Comments: This Laboratory Grown Diamond was created by Chemical Vapor Deposition (CVD) growth process.
Indications of post-growth treatment.



June 1, 2026
IGI Report No **LG803693745**
CUSHION MODIFIED BRILLIANT
8.42 X 7.71 X 5.02 MM
Carat Weight **3.05 CARATS**
Color Grade **FANCY DEEP BROWNISH PINK**
Clarity Grade **VS 2**
Depth **40.5%**
Table **17%**
Girdle **Thick to Very Thick (Faceted)**
Culet **Pointed**
Polish **EXCELLENT**
Symmetry **EXCELLENT**
Fluorescence **SLIGHT**
Inscription(s) **IGI LG803693745**
Comments: This Laboratory Grown Diamond was created by Chemical Vapor Deposition (CVD) growth process.
Indications of post-growth treatment.