



ELECTRONIC COPY

LG803689167 Report verification at igi.org



May 26, 2026 IGI Report Number LG803689167 Description LABORATORY GROWN DIAMOND Shape and Cutting Style CUT CORNERED RECTANGULAR MODIFIED BRILLIANT Measurements 8.86 X 6.24 X 4.34 MM GRADING RESULTS Carat Weight 2.09 CARATS Color Grade D Clarity Grade VS 1

LABORATORY GROWN DIAMOND REPORT

May 26, 2026 IGI Report Number LG803689167 Description LABORATORY GROWN DIAMOND Shape and Cutting Style CUT CORNERED RECTANGULAR MODIFIED BRILLIANT Measurements 8.86 X 6.24 X 4.34 MM

GRADING RESULTS

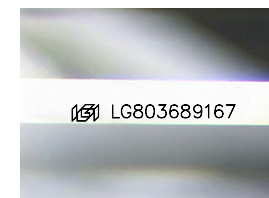
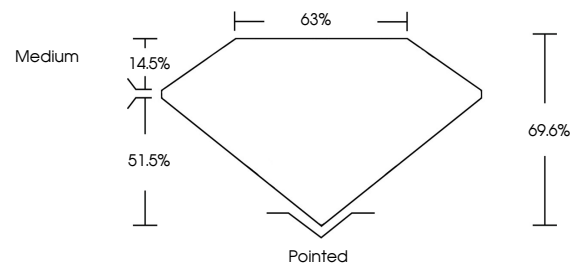
Carat Weight 2.09 CARATS Color Grade D Clarity Grade VS 1

ADDITIONAL GRADING INFORMATION

Polish EXCELLENT Symmetry EXCELLENT Fluorescence NONE Inscription(s) LG803689167

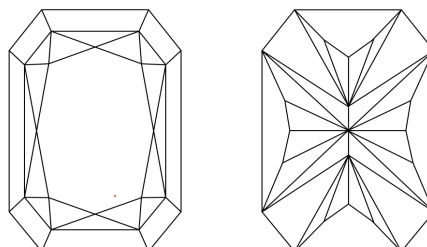
Comments: This Laboratory Grown Diamond was created by Chemical Vapor Deposition (CVD) growth process. Type IIa

PROPORTIONS



Sample Image Used

CLARITY CHARACTERISTICS



KEY TO SYMBOLS

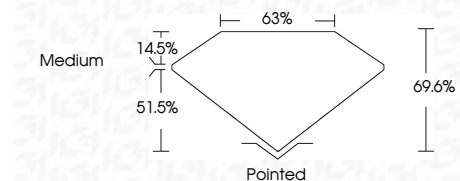
Red symbols indicate internal characteristics. Green symbols indicate external characteristics.

COLOR

D E F G H I J Faint Very Light Light

CLARITY

FL IF VS 1-2 VS 2-3 SI 1-2 I 1-3 Flawless Internally Flawless Very Very Slightly Included Very Slightly Included Slightly Included Included



ADDITIONAL GRADING INFORMATION

Polish EXCELLENT Symmetry EXCELLENT Fluorescence NONE Inscription(s) LG803689167 Comments: This Laboratory Grown Diamond was created by Chemical Vapor Deposition (CVD) growth process. Type IIa



May 26, 2026 IGI Report No. LG803689167 CUT CORNERED RECT. MODIFIED BRILLIANT 2.09 CARATS D 69.6% 63% Medium Pointed EXCELLENT EXCELLENT NONE LG803689167 Comments: This Laboratory Grown Diamond was created by Chemical Vapor Deposition (CVD) growth process. Type IIa