



ELECTRONIC COPY

LG803684000 Report verification at igi.org



May 23, 2026 IGI Report Number LG803684000 Description LABORATORY GROWN DIAMOND Shape and Cutting Style CUT CORNERED RECTANGULAR MODIFIED BRILLIANT Measurements 6.80 X 4.99 X 3.41 MM GRADING RESULTS Carat Weight 1.00 CARAT Color Grade E Clarity Grade VS 1

May 23, 2026 IGI Report Number LG803684000 Description LABORATORY GROWN DIAMOND Shape and Cutting Style CUT CORNERED RECTANGULAR MODIFIED BRILLIANT Measurements 6.80 X 4.99 X 3.41 MM

GRADING RESULTS

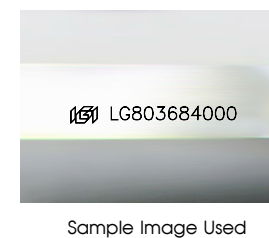
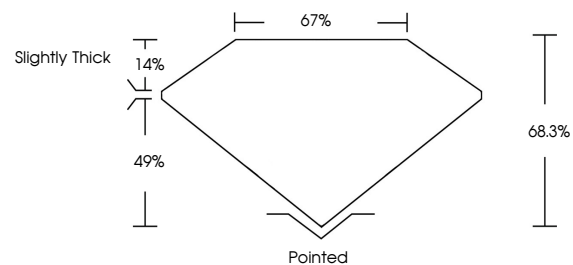
Carat Weight 1.00 CARAT Color Grade E Clarity Grade VS 1

ADDITIONAL GRADING INFORMATION

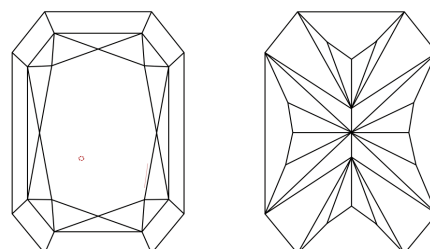
Polish VERY GOOD Symmetry VERY GOOD Fluorescence NONE Inscription(s) LG803684000

Comments: This Laboratory Grown Diamond was created by Chemical Vapor Deposition (CVD) growth process. Type IIa

PROPORTIONS



CLARITY CHARACTERISTICS



KEY TO SYMBOLS

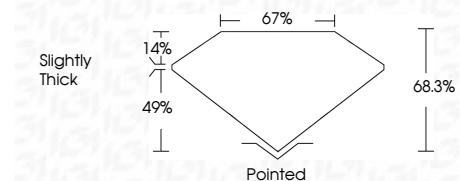
Red symbols indicate internal characteristics. Green symbols indicate external characteristics.

COLOR

D E F G H I J Faint Very Light Light

CLARITY

FL IF VS 1-2 VS 2-3 SI 1-2 I 1-3 Flawless Internally Flawless Very Very Slightly Included Very Slightly Included Slightly Included Included



ADDITIONAL GRADING INFORMATION

Polish VERY GOOD Symmetry VERY GOOD Fluorescence NONE Inscription(s) LG803684000 Comments: This Laboratory Grown Diamond was created by Chemical Vapor Deposition (CVD) growth process. Type IIa



May 23, 2026 IGI Report No. LG803684000 CUT CORNERED RECT. MODIFIED BRILLIANT 6.80 X 4.99 X 3.41 MM 1.00 CARAT E VS 1 68.3% 67% Slightly Thick Pointed VERY GOOD VERY GOOD NONE NONE LG803684000 Comments: This Laboratory Grown Diamond was created by Chemical Vapor Deposition (CVD) growth process. Type IIa