



ELECTRONIC COPY

LABORATORY GROWN DIAMOND REPORT

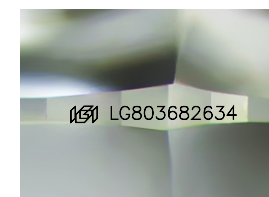
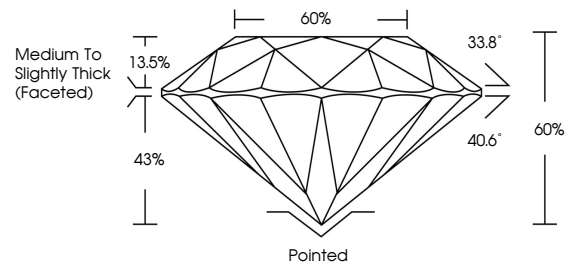
May 23, 2026
IGI Report Number LG803682634
Description LABORATORY GROWN DIAMOND
Shape and Cutting Style ROUND BRILLIANT
Measurements 9.05 - 9.09 X 5.44 MM
GRADING RESULTS
Carat Weight 2.76 CARATS
Color Grade F
Clarity Grade VVS 2
Cut Grade IDEAL

ADDITIONAL GRADING INFORMATION

Polish EXCELLENT
Symmetry EXCELLENT
Fluorescence NONE
Inscription(s) IGI LG803682634

Comments: This Laboratory Grown Diamond was created by Chemical Vapor Deposition (CVD) growth process. Type IIa

PROPORTIONS



Sample Image Used

COLOR

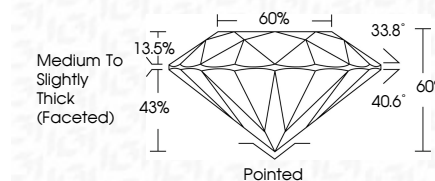
D E F G H I J Faint Very Light Light

CLARITY

FL IF VS 1-2 VS 1-2 SI 1-2 I 1-3
Flawless Internally Flawless Very Very Slightly Included Very Slightly Included Slightly Included Included



May 23, 2026
IGI Report Number LG803682634
Description LABORATORY GROWN DIAMOND
Shape and Cutting Style ROUND BRILLIANT
Measurements 9.05 - 9.09 X 5.44 MM
GRADING RESULTS
Carat Weight 2.76 CARATS
Color Grade F
Clarity Grade VVS 2
Cut Grade IDEAL



ADDITIONAL GRADING INFORMATION

Polish EXCELLENT
Symmetry EXCELLENT
Fluorescence NONE
Inscription(s) IGI LG803682634
Comments: This Laboratory Grown Diamond was created by Chemical Vapor Deposition (CVD) growth process. Type IIa



May 23, 2026
IGI Report No. LG803682634
ROUND BRILLIANT
2.76 CARATS F
9.05 - 9.09 X 5.44 MM
Carat Weight 2.76 CARATS
Color Grade F
Clarity Grade VVS 2
Cut Grade IDEAL
Depth 65%
Table 65%
Girdle Medium To Slightly Thick (Faceted)
Culet Pointed
Polish EXCELLENT
Symmetry EXCELLENT
Fluorescence NONE
Inscriptions(s) IGI LG803682634
Comments: This Laboratory Grown Diamond was created by Chemical Vapor Deposition (CVD) growth process. Type IIa