



ELECTRONIC COPY

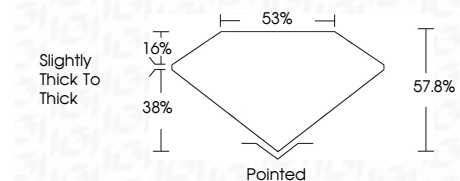
LG803680753
Report verification at igi.org



May 23, 2026
IGI Report Number **LG803680753**
Description **LABORATORY GROWN DIAMOND**
Shape and Cutting Style **STAR MODIFIED BRILLIANT**
Measurements **9.10 X 9.30 X 5.38 MM**

GRADING RESULTS

Carat Weight **2.29 CARATS**
Color Grade **F**
Clarity Grade **VVS 2**



ADDITIONAL GRADING INFORMATION

Polish **EXCELLENT**
Symmetry **EXCELLENT**
Fluorescence **NONE**
Inscription(s) **IGI LG803680753**
Comments: This Laboratory Grown Diamond was created by Chemical Vapor Deposition (CVD) growth process. Type IIa



May 23, 2026
IGI Report No LG803680753
STAR MODIFIED BRILLIANT
9.10 X 9.30 X 5.38 MM
2.29 CARATS
F
VVS 2
57.8%
38%
Slightly Thick To Thick
Pointed
EXCELLENT
EXCELLENT
NONE
IGI LG803680753
Comments: This Laboratory Grown Diamond was created by Chemical Vapor Deposition (CVD) growth process. Type IIa

LABORATORY GROWN DIAMOND REPORT

May 23, 2026
IGI Report Number **LG803680753**
Description **LABORATORY GROWN DIAMOND**
Shape and Cutting Style **STAR MODIFIED BRILLIANT**
Measurements **9.10 X 9.30 X 5.38 MM**

GRADING RESULTS

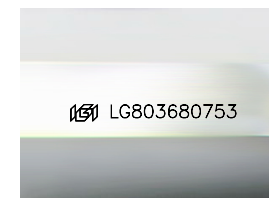
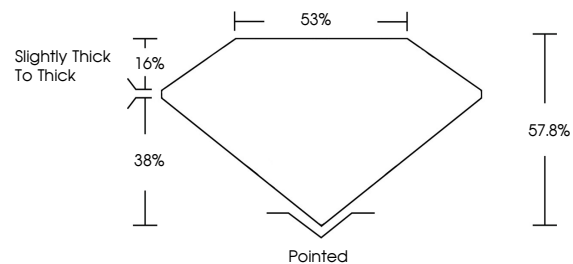
Carat Weight **2.29 CARATS**
Color Grade **F**
Clarity Grade **VVS 2**

ADDITIONAL GRADING INFORMATION

Polish **EXCELLENT**
Symmetry **EXCELLENT**
Fluorescence **NONE**
Inscription(s) **IGI LG803680753**

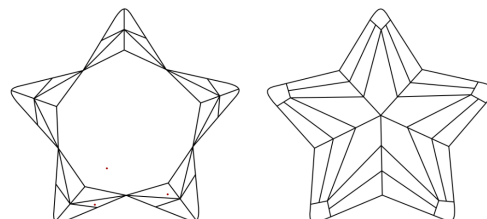
Comments: This Laboratory Grown Diamond was created by Chemical Vapor Deposition (CVD) growth process. Type IIa

PROPORTIONS



Sample Image Used

CLARITY CHARACTERISTICS



KEY TO SYMBOLS

Red symbols indicate internal characteristics.
Green symbols indicate external characteristics.

COLOR

D E F G H I J Faint Very Light Light

CLARITY

FL	IF	VVS ¹⁻²	VS ¹⁻²	SI ¹⁻²	I ¹⁻³
Flawless	Internally Flawless	Very Very Slightly Included	Very Slightly Included	Slightly Included	Included

