



**ELECTRONIC COPY**

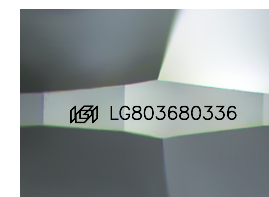
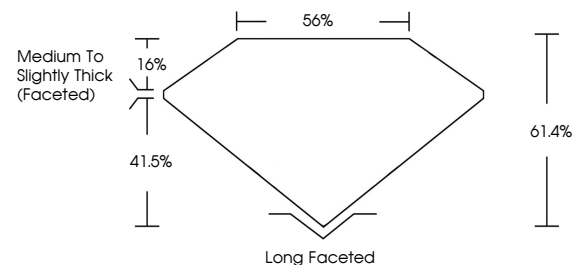
LG803680336  
Report verification at igi.org



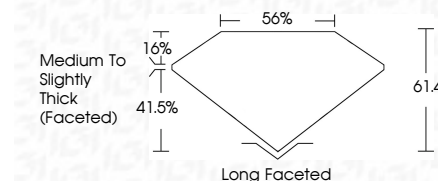
May 21, 2026  
IGI Report Number **LG803680336**  
Description **LABORATORY GROWN DIAMOND**  
Shape and Cutting Style **CUSHION MODIFIED BRILLIANT**  
Measurements **10.81 X 8.59 X 5.27 MM**  
**GRADING RESULTS**  
Carat Weight **3.64 CARATS**  
Color Grade **E**  
Clarity Grade **VVS 2**

May 21, 2026  
IGI Report Number **LG803680336**  
Description **LABORATORY GROWN DIAMOND**  
Shape and Cutting Style **CUSHION MODIFIED BRILLIANT**  
Measurements **10.81 X 8.59 X 5.27 MM**  
**GRADING RESULTS**  
Carat Weight **3.64 CARATS**  
Color Grade **E**  
Clarity Grade **VVS 2**

**PROPORTIONS**



Sample Image Used



**ADDITIONAL GRADING INFORMATION**

Polish **EXCELLENT**  
Symmetry **EXCELLENT**  
Fluorescence **NONE**  
Inscription(s) **IGI LG803680336**

Comments: This Laboratory Grown Diamond was created by Chemical Vapor Deposition (CVD) growth process.  
Type IIa

**ADDITIONAL GRADING INFORMATION**

Polish **EXCELLENT**  
Symmetry **EXCELLENT**  
Fluorescence **NONE**  
Inscription(s) **IGI LG803680336**  
Comments: This Laboratory Grown Diamond was created by Chemical Vapor Deposition (CVD) growth process.  
Type IIa

**COLOR**

D E F G H I J Faint Very Light Light

**CLARITY**

FL	IF	VVS <sup>1-2</sup>	VS <sup>1-2</sup>	SI <sup>1-2</sup>	I <sup>1-3</sup>
Flawless	Internally Flawless	Very Very Slightly Included	Very Slightly Included	Slightly Included	Included



**IGI**



May 21, 2026  
IGI Report No **LG803680336**  
**CUSHION MODIFIED BRILLIANT**  
**10.81 X 8.59 X 5.27 MM**  
Carat Weight **3.64 CARATS**  
Color Grade **E**  
Clarity Grade **VVS 2**  
Depth **61.4%**  
Table **56%**  
Girdle **Medium to Slightly Thick (Faceted)**  
Culet **Long Faceted**  
Polish **EXCELLENT**  
Symmetry **EXCELLENT**  
Fluorescence **NONE**  
Inscription(s) **IGI LG803680336**

Comments: This Laboratory Grown Diamond was created by Chemical Vapor Deposition (CVD) growth process.  
Type IIa