



May 25, 2026

IGI Report Number **LG803675140**

**OVAL BRILLIANT
LABORATORY GROWN DIAMOND**

7.30 X 5.15 X 3.25 MM

Carat Weight **0.78 CARAT**

Color Grade **D**

Clarity Grade **I.F.**

Polish **EXCELLENT**

Symmetry **EXCELLENT**

Fluorescence **NONE**

Inscription(s) **IGI LG803675140**

Comments: As Grown - No indication of post-growth treatment. This Laboratory Grown Diamond was created by High Pressure High Temperature (HPHT) growth process. Type II

LABORATORY GROWN DIAMOND REPORT

May 25, 2026

IGI Report Number

LG803675140

Description

LABORATORY GROWN DIAMOND

Shape and Cutting Style

OVAL BRILLIANT

Measurements

7.30 X 5.15 X 3.25 MM

GRADING RESULTS

Carat Weight

0.78 CARAT

Color Grade

D

Clarity Grade

INTERNALLY FLAWLESS

ADDITIONAL GRADING INFORMATION

Polish

EXCELLENT

Symmetry

EXCELLENT

Fluorescence

NONE

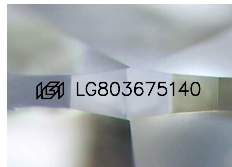
Inscription(s)

IGI LG803675140

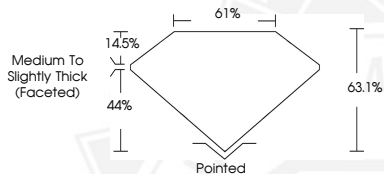
Comments: As Grown - No indication of post-growth treatment.

This Laboratory Grown Diamond was created by High Pressure High Temperature (HPHT) growth process.

Type II



Sample Image Used



May 25, 2026

IGI Report Number **LG803675140**

**OVAL BRILLIANT
LABORATORY GROWN DIAMOND**

7.30 X 5.15 X 3.25 MM

Carat Weight **0.78 CARAT**

Color Grade **D**

Clarity Grade **I.F.**

Polish **EXCELLENT**

Symmetry **EXCELLENT**

Fluorescence **NONE**

Inscription(s) **IGI LG803675140**

Comments: As Grown - No indication of post-growth treatment. This Laboratory Grown Diamond was created by High Pressure High Temperature (HPHT) growth process. Type II



THIS DOCUMENT WAS PRODUCED WITH THE FOLLOWING SECURITY MEASURES: SPECIAL DOCUMENT PAPER, INK SCREENS, WATERMARK, BACKGROUND DESIGNS, HOLOGRAM AND OTHER SECURITY FEATURES NOT LISTED AND DO EXCEED DOCUMENT SECURITY INDUSTRY GUIDELINES.