



ELECTRONIC COPY

LG803671656
Report verification at igi.org



May 25, 2026

IGI Report Number **LG803671656**

Description **LABORATORY GROWN DIAMOND**

Shape and Cutting Style **EMERALD CUT**

Measurements **14.50 X 9.51 X 6.24 MM**

GRADING RESULTS

Carat Weight **8.59 CARATS**

Color Grade **F**

Clarity Grade **VS 1**

May 25, 2026
IGI Report Number **LG803671656**
Description **LABORATORY GROWN DIAMOND**
Shape and Cutting Style **EMERALD CUT**
Measurements **14.50 X 9.51 X 6.24 MM**

GRADING RESULTS

Carat Weight **8.59 CARATS**

Color Grade **F**

Clarity Grade **VS 1**

ADDITIONAL GRADING INFORMATION

Polish **EXCELLENT**

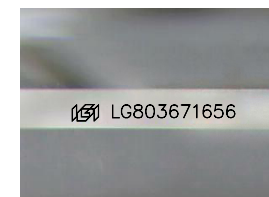
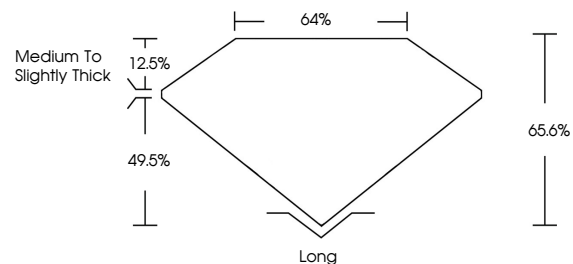
Symmetry **EXCELLENT**

Fluorescence **NONE**

Inscription(s) **IGI LG803671656**

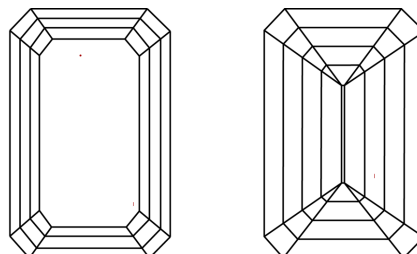
Comments: This Laboratory Grown Diamond was created by Chemical Vapor Deposition (CVD) growth process.
Type IIa

PROPORTIONS



Sample Image Used

CLARITY CHARACTERISTICS



KEY TO SYMBOLS

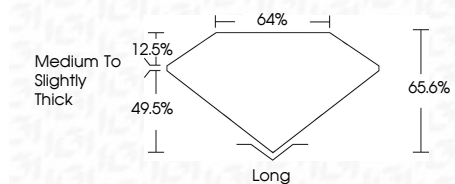
Red symbols indicate internal characteristics.
Green symbols indicate external characteristics.

COLOR

D E F G H I J Faint Very Light Light

CLARITY

FL	IF	VS ¹⁻²	VS ¹⁻²	SI ¹⁻²	I ¹⁻³
Flawless	Internally Flawless	Very Very Slightly Included	Very Slightly Included	Slightly Included	Included



ADDITIONAL GRADING INFORMATION

Polish **EXCELLENT**

Symmetry **EXCELLENT**

Fluorescence **NONE**

Inscription(s) **IGI LG803671656**

Comments: This Laboratory Grown Diamond was created by Chemical Vapor Deposition (CVD) growth process.
Type IIa



May 25, 2026
IGI Report No. LG803671656
EMERALD CUT
14.50 X 9.51 X 6.24 MM
8.59 CARATS
F
VS 1
65.6%
49.5%
12.5%
Medium to Slightly Thick
Long
EXCELLENT
EXCELLENT
NONE
IGI LG803671656

Comments: This Laboratory Grown Diamond was created by Chemical Vapor Deposition (CVD) growth process.
Type IIa