



**ELECTRONIC COPY**

LG803669185  
Report verification at igi.org



May 28, 2026

IGI Report Number **LG803669185**

Description **LABORATORY GROWN DIAMOND**

Shape and Cutting Style **EMERALD CUT**

Measurements **10.61 X 5.27 X 3.46 MM**

**GRADING RESULTS**

Carat Weight **2.05 CARATS**

Color Grade **FANCY VIVID GREEN**

Clarity Grade **VS 1**

**LABORATORY GROWN DIAMOND REPORT**

May 28, 2026

IGI Report Number **LG803669185**

Description **LABORATORY GROWN DIAMOND**

Shape and Cutting Style **EMERALD CUT**

Measurements **10.61 X 5.27 X 3.46 MM**

**GRADING RESULTS**

Carat Weight **2.05 CARATS**

Color Grade **FANCY VIVID GREEN**

Clarity Grade **VS 1**

**ADDITIONAL GRADING INFORMATION**

Polish **EXCELLENT**

Symmetry **EXCELLENT**

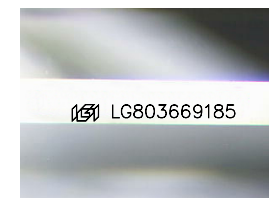
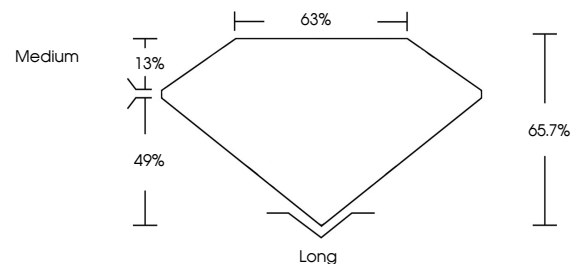
Fluorescence **VERY SLIGHT**

Inscription(s) **IGI LG803669185**

Comments: This Laboratory Grown Diamond was created by Chemical Vapor Deposition (CVD) growth process.

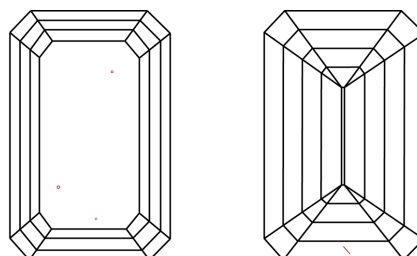
Indications of post-growth treatment.

**PROPORTIONS**



Sample Image Used

**CLARITY CHARACTERISTICS**



**KEY TO SYMBOLS**

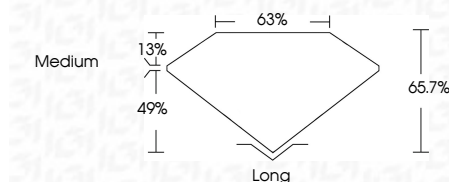
Red symbols indicate internal characteristics.  
Green symbols indicate external characteristics.

**COLOR**

D E F G H I J Faint Very Light Light

**CLARITY**

FL	IF	VS <sup>1-2</sup>	VS <sup>1-2</sup>	SI <sup>1-2</sup>	I <sup>1-3</sup>
Flawless	Internally Flawless	Very Very Slightly Included	Very Slightly Included	Slightly Included	Included



**ADDITIONAL GRADING INFORMATION**

Polish **EXCELLENT**

Symmetry **EXCELLENT**

Fluorescence **VERY SLIGHT**

Inscription(s) **IGI LG803669185**

Comments: This Laboratory Grown Diamond was created by Chemical Vapor Deposition (CVD) growth process. Indications of post-growth treatment.



May 28, 2026  
IGI Report No. LG803669185  
EMERALD CUT

2.05 CARATS  
FANCY VIVID GREEN

VS 1  
65.7%  
63%  
Medium

Long  
EXCELLENT  
EXCELLENT  
VERY SLIGHT  
IGI LG803669185

Comments: This Laboratory Grown Diamond was created by Chemical Vapor Deposition (CVD) growth process. Indications of post-growth treatment.