



ELECTRONIC COPY

LG803665317
Report verification at igi.org



May 26, 2026
IGI Report Number **LG803665317**
Description **LABORATORY GROWN DIAMOND**
Shape and Cutting Style **SQUARE CUSHION MODIFIED BRILLIANT**
Measurements **8.79 X 8.49 X 5.51 MM**
GRADING RESULTS
Carat Weight **4.03 CARATS**
Color Grade **FANCY VIVID YELLOW**
Clarity Grade **VS 2**

LABORATORY GROWN DIAMOND REPORT

May 26, 2026
IGI Report Number **LG803665317**
Description **LABORATORY GROWN DIAMOND**
Shape and Cutting Style **SQUARE CUSHION MODIFIED BRILLIANT**
Measurements **8.79 X 8.49 X 5.51 MM**

GRADING RESULTS

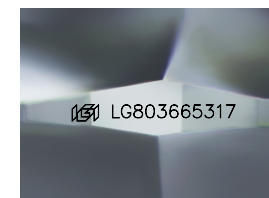
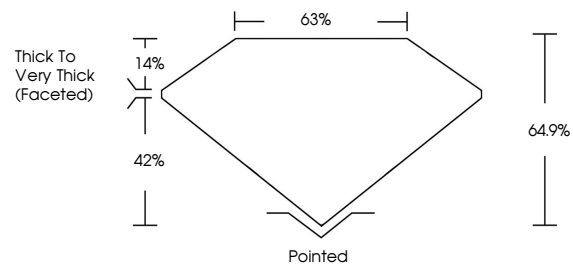
Carat Weight **4.03 CARATS**
Color Grade **FANCY VIVID YELLOW**
Clarity Grade **VS 2**

ADDITIONAL GRADING INFORMATION

Polish **EXCELLENT**
Symmetry **EXCELLENT**
Fluorescence **NONE**
Inscription(s) **IGI LG803665317**

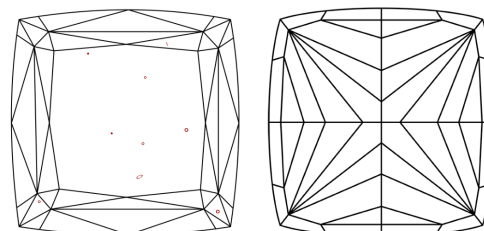
Comments: This Laboratory Grown Diamond was created by Chemical Vapor Deposition (CVD) growth process.

PROPORTIONS



Sample Image Used

CLARITY CHARACTERISTICS



KEY TO SYMBOLS

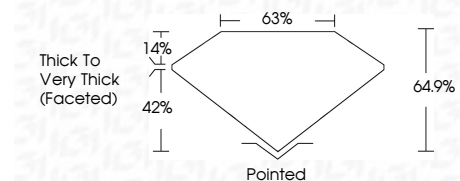
Red symbols indicate internal characteristics.
Green symbols indicate external characteristics.

COLOR

D E F G H I J Faint Very Light Light

CLARITY

FL	IF	VS ¹⁻²	VS ¹⁻²	SI ¹⁻²	I ¹⁻³
Flawless	Internally Flawless	Very Very Slightly Included	Very Slightly Included	Slightly Included	Included



ADDITIONAL GRADING INFORMATION

Polish **EXCELLENT**
Symmetry **EXCELLENT**
Fluorescence **NONE**
Inscription(s) **IGI LG803665317**
Comments: This Laboratory Grown Diamond was created by Chemical Vapor Deposition (CVD) growth process.



May 26, 2026
IGI Report No. **LG803665317**
SQUARE CUSHION MODIFIED BRILLIANT
4.03 CARATS
Carat Weight **FANCY VIVID YELLOW**
Color Grade **VS 2**
Clarity Grade **64.9%**
Depth **63%**
Table
Girdle
Thick to Very Thick (Faceted)
Pointed
Polish **EXCELLENT**
Symmetry **EXCELLENT**
Fluorescence **NONE**
Inscription(s) **IGI LG803665317**
Comments: This Laboratory Grown Diamond was created by Chemical Vapor Deposition (CVD) growth process.