



June 5, 2026

IGI Report Number LG803661853
CUSHION MODIFIED BRILLIANT
LABORATORY GROWN DIAMOND
6.69 X 5.04 X 3.49 MM

Carat Weight	0.98 CARAT
Color Grade	F
Clarity Grade	VS 2
Polish	VERY GOOD
Symmetry	VERY GOOD
Fluorescence	NONE
Inscription(s)	IGI LG803661853

Comments: This Laboratory Grown Diamond was created by Chemical Vapor Deposition (CVD) growth process. Type IIa

LABORATORY GROWN DIAMOND REPORT

June 5, 2026
IGI Report Number **LG803661853**
Description **LABORATORY GROWN DIAMOND**
Shape and Cutting Style **CUSHION MODIFIED BRILLIANT**
Measurements **6.69 X 5.04 X 3.49 MM**

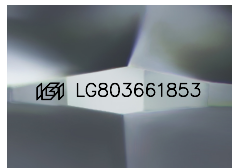
GRADING RESULTS

Carat Weight **0.98 CARAT**
Color Grade **F**
Clarity Grade **VS 2**

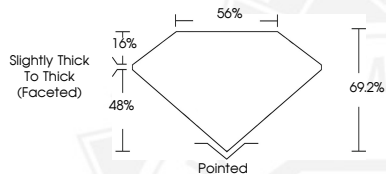
ADDITIONAL GRADING INFORMATION

Polish **VERY GOOD**
Symmetry **VERY GOOD**
Fluorescence **NONE**
Inscription(s) **IGI LG803661853**

Comments: This Laboratory Grown Diamond was created by Chemical Vapor Deposition (CVD) growth process.
Type IIa



Sample Image Used



June 5, 2026

IGI Report Number LG803661853
CUSHION MODIFIED BRILLIANT
LABORATORY GROWN DIAMOND
6.69 X 5.04 X 3.49 MM

Carat Weight	0.98 CARAT
Color Grade	F
Clarity Grade	VS 2
Polish	VERY GOOD
Symmetry	VERY GOOD
Fluorescence	NONE
Inscription(s)	IGI LG803661853

Comments: This Laboratory Grown Diamond was created by Chemical Vapor Deposition (CVD) growth process. Type IIa



THIS DOCUMENT WAS PRODUCED WITH THE FOLLOWING SECURITY MEASURES: SPECIAL DOCUMENT PAPER, INK SCREENS, WATERMARK, BACKGROUND DESIGNS, HOLOGRAM AND OTHER SECURITY FEATURES NOT LISTED AND DO EXCEED DOCUMENT SECURITY INDUSTRY GUIDELINES.