



ELECTRONIC COPY

LG803661834
Report verification at igi.org



June 4, 2026
IGI Report Number **LG803661834**
Description **LABORATORY GROWN DIAMOND**
Shape and Cutting Style **CUSHION BRILLIANT**
Measurements **5.60 X 5.48 X 3.55 MM**
GRADING RESULTS
Carat Weight **0.96 CARAT**
Color Grade **FANCY DARK BLUE**

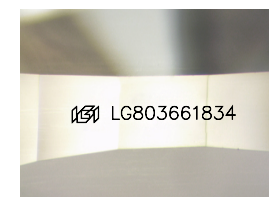
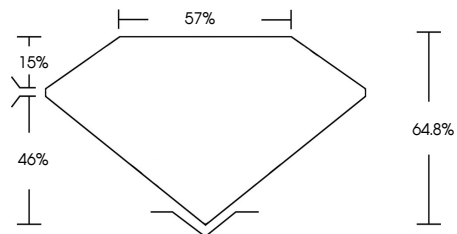
June 4, 2026
IGI Report Number **LG803661834**
Description **LABORATORY GROWN DIAMOND**
Shape and Cutting Style **CUSHION BRILLIANT**
Measurements **5.60 X 5.48 X 3.55 MM**
GRADING RESULTS
Carat Weight **0.96 CARAT**
Color Grade **FANCY DARK BLUE**

ADDITIONAL GRADING INFORMATION

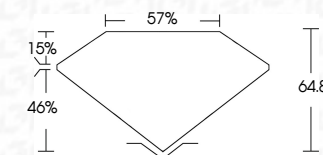
Fluorescence **NONE**
Inscription(s) **LG803661834**

Comments: This Laboratory Grown Diamond was created by High Pressure High Temperature (HPHT) growth process.
Indications of post-growth treatment.

PROPORTIONS



Sample Image Used



COLOR

D E F G H I J Faint Very Light Light

CLARITY

FL	IF	VS ¹⁻²	VS ¹⁻²	SI ¹⁻²	I ¹⁻³
Flawless	Internally Flawless	Very Very Slightly Included	Very Slightly Included	Slightly Included	Included

ADDITIONAL GRADING INFORMATION

Fluorescence **NONE**
Inscription(s) **LG803661834**
Comments: This Laboratory Grown Diamond was created by High Pressure High Temperature (HPHT) growth process.
Indications of post-growth treatment.



IGI



June 4, 2026
IGI Report No. **LG803661834**
CUSHION BRILLIANT
Carat Weight **0.96 CARAT**
Color Grade **FANCY DARK BLUE**
Depth **64.8%**
Table **57%**
Culet **NONE**
Fluorescence **IGI LG803661834**
Inscription(s)

Comments: This Laboratory Grown Diamond was created by High Pressure High Temperature (HPHT) growth process.
Indications of post-growth treatment.