



May 26, 2026

IGI Report Number LG803660203
**CUT CORNERED RECTANGULAR
MODIFIED BRILLIANT**
LABORATORY GROWN DIAMOND
6.02 X 4.06 X 2.54 MM

Carat Weight	0.52 CARAT
Color Grade	F
Clarity Grade	VVS 2
Polish	VERY GOOD
Symmetry	GOOD
Fluorescence	NONE
Inscription(s)	IGI LG803660203

Comments: This Laboratory Grown Diamond was created by Chemical Vapor Deposition (CVD) growth process. Type IIa

LABORATORY GROWN DIAMOND REPORT

May 26, 2026
IGI Report Number **LG803660203**
Description **LABORATORY GROWN DIAMOND**
Shape and Cutting Style **CUT CORNERED RECTANGULAR MODIFIED
BRILLIANT**
Measurements **6.02 X 4.06 X 2.54 MM**

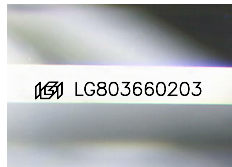
GRADING RESULTS

Carat Weight **0.52 CARAT**
Color Grade **F**
Clarity Grade **VVS 2**

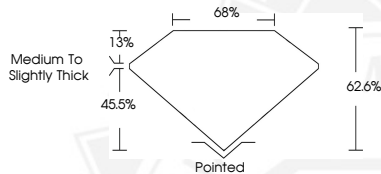
ADDITIONAL GRADING INFORMATION

Polish **VERY GOOD**
Symmetry **GOOD**
Fluorescence **NONE**
Inscription(s) **IGI LG803660203**

Comments: This Laboratory Grown Diamond was created by Chemical Vapor Deposition (CVD) growth process. Type IIa



Sample Image Used



May 26, 2026

IGI Report Number LG803660203
**CUT CORNERED RECTANGULAR
MODIFIED BRILLIANT**
LABORATORY GROWN DIAMOND
6.02 X 4.06 X 2.54 MM

Carat Weight	0.52 CARAT
Color Grade	F
Clarity Grade	VVS 2
Polish	VERY GOOD
Symmetry	GOOD
Fluorescence	NONE
Inscription(s)	IGI LG803660203

Comments: This Laboratory Grown Diamond was created by Chemical Vapor Deposition (CVD) growth process. Type IIa



THIS DOCUMENT WAS PRODUCED WITH THE FOLLOWING SECURITY MEASURES: SPECIAL DOCUMENT PAPER, INK SCREENS, WATERMARK, BACKGROUND DESIGNS, HOLOGRAM AND OTHER SECURITY FEATURES NOT LISTED AND DO EXCEED DOCUMENT SECURITY INDUSTRY GUIDELINES.