



**LABORATORY GROWN DIAMOND REPORT**

May 26, 2026  
 IGI Report Number **LG803660156**  
 Description **LABORATORY GROWN DIAMOND**  
 Shape and Cutting Style **HEART BRILLIANT**  
 Measurements **5.85 X 6.91 X 4.22 MM**

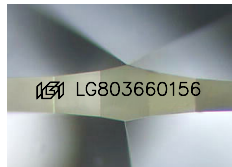
**GRADING RESULTS**

Carat Weight **0.99 CARAT**  
 Color Grade **F**  
 Clarity Grade **VVS 1**

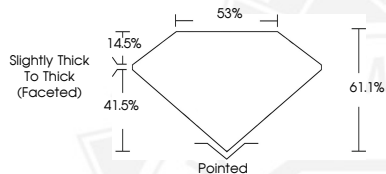
**ADDITIONAL GRADING INFORMATION**

Polish **VERY GOOD**  
 Symmetry **VERY GOOD**  
 Fluorescence **NONE**  
 Inscription(s) **IGI LG803660156**

Comments: This Laboratory Grown Diamond was created by Chemical Vapor Deposition (CVD) growth process. Type IIa



Sample Image Used



May 26, 2026

IGI Report Number **LG803660156**  
**HEART BRILLIANT**  
**LABORATORY GROWN DIAMOND**  
**5.85 X 6.91 X 4.22 MM**  
 Carat Weight **0.99 CARAT**  
 Color Grade **F**  
 Clarity Grade **VVS 1**  
 Polish **VERY GOOD**  
 Symmetry **VERY GOOD**  
 Fluorescence **NONE**  
 Inscription(s) **IGI LG803660156**

Comments: This Laboratory Grown Diamond was created by Chemical Vapor Deposition (CVD) growth process. Type IIa



May 26, 2026

IGI Report Number **LG803660156**  
**HEART BRILLIANT**  
**LABORATORY GROWN DIAMOND**  
**5.85 X 6.91 X 4.22 MM**  
 Carat Weight **0.99 CARAT**  
 Color Grade **F**  
 Clarity Grade **VVS 1**  
 Polish **VERY GOOD**  
 Symmetry **VERY GOOD**  
 Fluorescence **NONE**  
 Inscription(s) **IGI LG803660156**

Comments: This Laboratory Grown Diamond was created by Chemical Vapor Deposition (CVD) growth process. Type IIa



THIS DOCUMENT WAS PRODUCED WITH THE FOLLOWING SECURITY MEASURES: SPECIAL DOCUMENT PAPER, INK SCREENS, WATERMARK, BACKGROUND DESIGNS, HOLOGRAM AND OTHER SECURITY FEATURES NOT LISTED AND DO EXCEED DOCUMENT SECURITY INDUSTRY GUIDELINES.