



ELECTRONIC COPY

LG803658362
Report verification at igi.org



May 25, 2026
IGI Report Number **LG803658362**
Description **LABORATORY GROWN DIAMOND**
Shape and Cutting Style **ROUND BRILLIANT**
Measurements **6.42 - 6.46 X 3.93 MM**
GRADING RESULTS
Carat Weight **1.01 CARAT**
Color Grade **FANCY LIGHT YELLOW**
Clarity Grade **VS 1**
Cut Grade **EXCELLENT**

May 25, 2026
IGI Report Number **LG803658362**
Description **LABORATORY GROWN DIAMOND**
Shape and Cutting Style **ROUND BRILLIANT**
Measurements **6.42 - 6.46 X 3.93 MM**

GRADING RESULTS

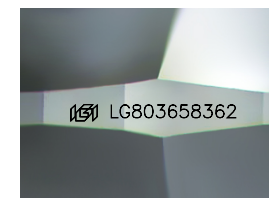
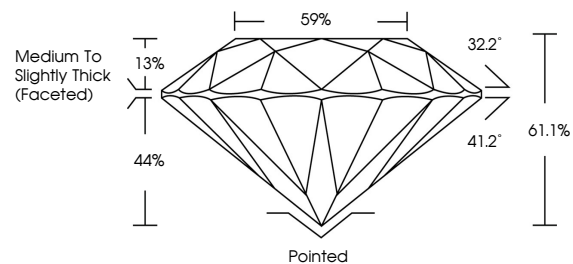
Carat Weight **1.01 CARAT**
Color Grade **FANCY LIGHT YELLOW**
Clarity Grade **VS 1**
Cut Grade **EXCELLENT**

ADDITIONAL GRADING INFORMATION

Polish **EXCELLENT**
Symmetry **EXCELLENT**
Fluorescence **NONE**
Inscription(s) **IGI LG803658362**

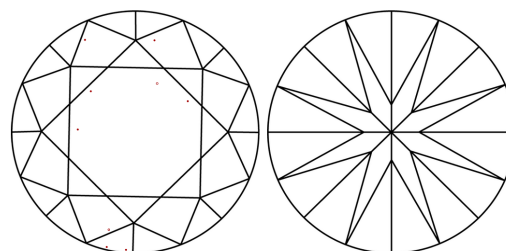
Comments: This Laboratory Grown Diamond was created by Chemical Vapor Deposition (CVD) growth process.

PROPORTIONS



Sample Image Used

CLARITY CHARACTERISTICS



KEY TO SYMBOLS

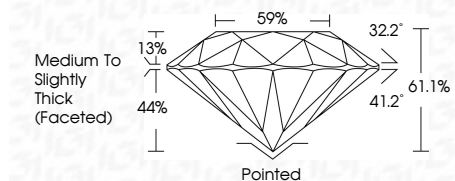
Red symbols indicate internal characteristics.
Green symbols indicate external characteristics.

COLOR

D E F G H I J Faint Very Light Light

CLARITY

FL	IF	VS ¹⁻²	VS ¹⁻²	SI ¹⁻²	I ¹⁻³
Flawless	Internally Flawless	Very Very Slightly Included	Very Slightly Included	Slightly Included	Included



ADDITIONAL GRADING INFORMATION

Polish **EXCELLENT**
Symmetry **EXCELLENT**
Fluorescence **NONE**
Inscription(s) **IGI LG803658362**
Comments: This Laboratory Grown Diamond was created by Chemical Vapor Deposition (CVD) growth process.



May 25, 2026
IGI Report No. LG803658362
ROUND BRILLIANT
1.01 CARAT
6.42 - 6.46 X 3.93 MM
Carat Weight
Color Grade **FANCY LIGHT YELLOW**
Clarity Grade **VS 1**
Depth **EXCELLENT**
Table **61.1%**
Girdle **59%**
Medium To Slightly Thick (Faceted)
Culet **Pointed**
Polish **EXCELLENT**
Symmetry **EXCELLENT**
Fluorescence **NONE**
Inscriptions(s) **IGI LG803658362**
Comments: This Laboratory Grown Diamond was created by Chemical Vapor Deposition (CVD) growth process.