



ELECTRONIC COPY

LG803658279 Report verification at igi.org

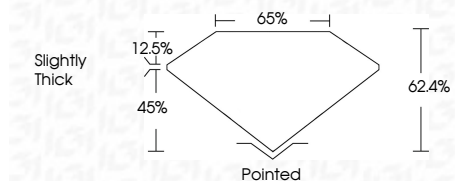


May 21, 2026 IGI Report Number LG803658279 Description LABORATORY GROWN DIAMOND Shape and Cutting Style CUT CORNERED RECTANGULAR MODIFIED BRILLIANT

Measurements 7.28 X 5.51 X 3.44 MM

GRADING RESULTS

Carat Weight 1.21 CARAT Color Grade D Clarity Grade VVS 2



ADDITIONAL GRADING INFORMATION

Polish EXCELLENT Symmetry VERY GOOD Fluorescence NONE Inscription(s) LG803658279 Comments: This Laboratory Grown Diamond was created by Chemical Vapor Deposition (CVD) growth process. Type IIa



May 21, 2026 IGI Report No. LG803658279 CUT CORNERED RECT. MODIFIED BRILLIANT 1.21 CARAT D VVS 2 7.28 X 5.51 X 3.44 MM 62.4% 65% Slightly Thick Pointed EXCELLENT VERY GOOD NONE LG803658279

Comments: This Laboratory Grown Diamond was created by Chemical Vapor Deposition (CVD) growth process. Type IIa

LABORATORY GROWN DIAMOND REPORT

May 21, 2026 IGI Report Number LG803658279 Description LABORATORY GROWN DIAMOND Shape and Cutting Style CUT CORNERED RECTANGULAR MODIFIED BRILLIANT Measurements 7.28 X 5.51 X 3.44 MM

GRADING RESULTS

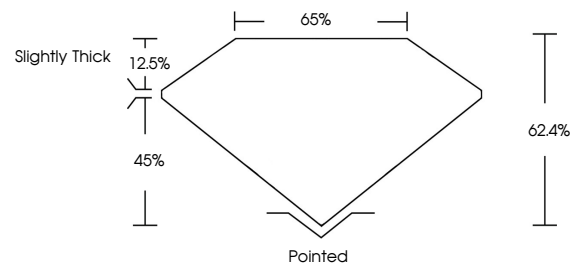
Carat Weight 1.21 CARAT Color Grade D Clarity Grade VVS 2

ADDITIONAL GRADING INFORMATION

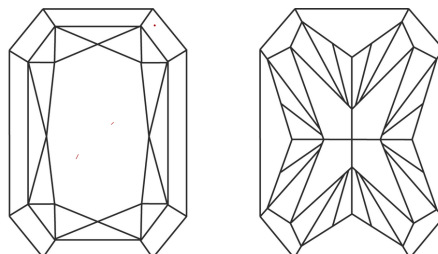
Polish EXCELLENT Symmetry VERY GOOD Fluorescence NONE Inscription(s) LG803658279

Comments: This Laboratory Grown Diamond was created by Chemical Vapor Deposition (CVD) growth process. Type IIa

PROPORTIONS

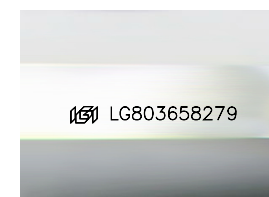


CLARITY CHARACTERISTICS



KEY TO SYMBOLS

Red symbols indicate internal characteristics. Green symbols indicate external characteristics.



Sample Image Used

COLOR

D E F G H I J Faint Very Light Light

CLARITY

FL IF VVS 1-2 VS 1-2 SI 1-2 I 1-3 Flawless Internally Flawless Very Very Slightly Included Very Slightly Included Slightly Included Included

